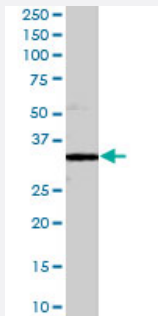


STX6 polyclonal antibody

Catalog # PAB7011 Size 100 ug

Applications



Western Blot (Tissue lysate)

STX6 polyclonal antibody (Cat # PAB7011) (0.3 ug/mL) staining of human lymph node lysate (35 ug protein in RIPA buffer). Primary incubation was 1 hour. Detected by chemiluminescence.

Specification

Product Description	Goat polyclonal antibody raised against synthetic peptide of STX6.
Immunogen	A synthetic peptide corresponding to human STX6.
Sequence	C-QALAERKNRQA
Host	Goat
Theoretical MW (kDa)	29.2
Reactivity	Human
Form	Liquid
Purification	Antigen affinity purification
Concentration	0.5 mg/mL
Quality Control Testing	Antibody Reactive Against Synthetic Peptide.
Recommend Usage	ELISA (1:32000) Western Blot (0.3-1 ug/mL) The optimal working dilution should be determined by the end user.

Storage Buffer	In Tris saline, pH 7.3 (0.5% BSA, 0.02% sodium azide)
Storage Instruction	Store at -20°C. Aliquot to avoid repeated freezing and thawing.
Note	This product contains sodium azide: a POISONOUS AND HAZARDOUS SUBSTANCE which should be handled by trained staff only.

Applications

- Western Blot (Tissue lysate)

STX6 polyclonal antibody (Cat # PAB7011) (0.3 ug/mL) staining of human lymph node lysate (35 ug protein in RIPA buffer). Primary incubation was 1 hour. Detected by chemiluminescence.

- Enzyme-linked Immunoabsorbent Assay

Gene Info — STX6

Entrez GeneID	10228
Protein Accession#	NP_005810.1
Gene Name	STX6
Gene Alias	-
Gene Description	syntaxin 6
Omim ID	603944
Gene Ontology	Hyperlink
Other Designations	OTTHUMP00000033134

Publication Reference

- [Syntaxin 6 and Vti1b form a novel SNARE complex, which is up-regulated in activated macrophages to facilitate exocytosis of tumor necrosis Factor-alpha.](#)

Murray RZ, Wylie FG, Khromykh T, Hume DA, Stow JL.

The Journal of Biological Chemistry 2005 Mar; 280(11):10478.

Application: IF, WB, Mouse, Macrophages, Raw 264.7 cells

Pathway

- [SNARE interactions in vesicular transport](#)