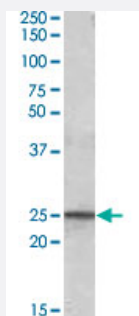


PGRMC1 polyclonal antibody

Catalog # PAB7006

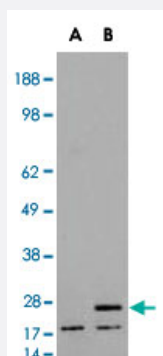
Size 100 ug

Applications



Western Blot (Tissue lysate)

PGRMC1 polyclonal antibody (Cat # PAB7006) (0.1 ug/mL) staining of human kidney lysate (35 ug protein in RIPA buffer). Primary incubation was 1 hour. Detected by chemiluminescence.



Western Blot (Transfected lysate)

HEK293 overexpressing human PGRMC1 and probed with PGRMC1 polyclonal antibody (Cat # PAB7006) (mock transfection in first lane), tested by Origene.

Specification

Product Description	Goat polyclonal antibody raised against synthetic peptide of PGRMC1.
Immunogen	A synthetic peptide corresponding to C-terminus of human PGRMC1.
Sequence	C-EPKDESARKND
Host	Goat
Theoretical MW (kDa)	21.7
Reactivity	Human

Form	Liquid
Purification	Antigen affinity purification
Concentration	0.5 mg/mL
Recommend Usage	ELISA (1:4000) Western Blot (0.03-0.1 ug/mL) The optimal working dilution should be determined by the end user.
Storage Buffer	In Tris saline, pH 7.3 (0.5% BSA, 0.02% sodium azide)
Storage Instruction	Store at -20°C. Aliquot to avoid repeated freezing and thawing.
Note	This product contains sodium azide: a POISONOUS AND HAZARDOUS SUBSTANCE which should be handled by trained staff only.

Applications

- Western Blot (Tissue lysate)

PGRMC1 polyclonal antibody (Cat # PAB7006) (0.1 ug/mL) staining of human kidney lysate (35 ug protein in RIPA buffer). Primary incubation was 1 hour. Detected by chemiluminescence.

- Western Blot (Transfected lysate)

HEK293 overexpressing human PGRMC1 and probed with PGRMC1 polyclonal antibody (Cat # PAB7006) (mock transfection in first lane), tested by Origene.

- Enzyme-linked Immunoabsorbent Assay

Gene Info — PGRMC1

Entrez GeneID	10857
Protein Accession#	NP_006658.1
Gene Name	PGRMC1
Gene Alias	HPR6.6, MPR
Gene Description	progesterone receptor membrane component 1
Omim ID	300435
Gene Ontology	Hyperlink

Gene Summary

Progesterone binding protein is a putative steroid membrane receptor. The protein is expressed predominantly in the liver and kidney. [provided by RefSeq]

Other Designations

OTTHUMP00000023897|progesterone binding protein

Publication Reference

- [Hpr6.6 protein mediates cell death from oxidative damage in MCF-7 human breast cancer cells.](#)

Hand RA, Craven RJ.

Journal of Cellular Biochemistry 2003 Oct; 90(3):534.

Disease

- [Connective Tissue Diseases](#)
- [Fetal Diseases](#)
- [Genetic Predisposition to Disease](#)
- [Infection](#)
- [Inflammation](#)
- [Musculoskeletal Diseases](#)
- [Pregnancy Complications](#)
- [Premature Birth](#)
- [Skin Diseases](#)