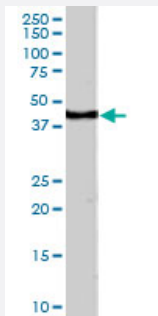


CDX2 polyclonal antibody

Catalog # PAB6998 Size 100 ug

Applications



Western Blot (Tissue lysate)

CDX2 polyclonal antibody (Cat # PAB6998) (1 ug/mL) staining of human kidney lysate (35 ug protein in RIPA buffer). Primary incubation was 1 hour. Detected by chemiluminescence.

Specification

Product Description Goat polyclonal antibody raised against synthetic peptide of CDX2.

Immunogen A synthetic peptide corresponding to human CDX2.

Sequence EQLSPGGQRRNLCE

Host Goat

Theoretical MW (kDa) 33.5

Reactivity Human

Specificity This antibody is not expected to cross-react with CDX1 and 4.

Form Liquid

Purification Antigen affinity purification

Concentration 0.5 mg/mL

Quality Control Testing Antibody Reactive Against Synthetic Peptide.

Recommend Usage	ELISA (1:4000) Western Blot (1-3 ug/mL) The optimal working dilution should be determined by the end user.
Storage Buffer	In Tris saline, pH 7.3 (0.5% BSA, 0.02% sodium azide)
Storage Instruction	Store at -20°C. Aliquot to avoid repeated freezing and thawing.
Note	This product contains sodium azide: a POISONOUS AND HAZARDOUS SUBSTANCE which should be handled by trained staff only.

Applications

- Western Blot (Tissue lysate)

CDX2 polyclonal antibody (Cat # PAB6998) (1 ug/mL) staining of human kidney lysate (35 ug protein in RIPA buffer). Primary incubation was 1 hour. Detected by chemiluminescence.

- Enzyme-linked Immunoabsorbent Assay

Gene Info — CDX2

Entrez GeneID	1045
Protein Accession#	NP_001256.1
Gene Name	CDX2
Gene Alias	CDX-3, CDX3
Gene Description	caudal type homeobox 2
Omim ID	600297
Gene Ontology	Hyperlink
Gene Summary	The level and beta-cell specificity of insulin gene expression are regulated by a set of nuclear proteins that bind to specific sequences within the promoter of the insulin gene (INS; MIM 176730) and interact with RNA polymerase to activate or repress transcription. The proteins LMX1 (MIM 600298) and CDX3 are homeodomain proteins that bind an A/T-rich sequence in the insulin promoter and stimulate its transcription (German et al., 1994 [PubMed 7698771]).[supplied by OMIM]
Other Designations	OTTHUMP00000018176 caudal type homeobox transcription factor 2 caudal type homeobox transcription factor 2

Publication Reference

- [Vertebrate endoderm development.](#)

Wells JM, Melton DA.

Annual Review of Cell and Developmental Biology 1999 Jan; 15:393.

Application: IF, IHC, WB-Ce, WB-Ti, Human, Mouse, Mouse embryos

Disease

- [Colorectal Neoplasms](#)
- [Genetic Predisposition to Disease](#)