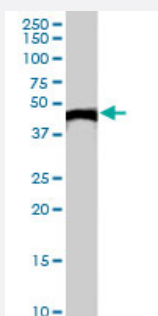


CKB polyclonal antibody

Catalog # PAB6995 Size 100 ug

Applications



Western Blot (Tissue lysate)

CKB polyclonal antibody (Cat # PAB6995) (0.1 ug/mL) staining of human brain lysate (35 ug protein in RIPA buffer). Primary incubation was 1 hour. Detected by chemiluminescence.

Specification

Product Description Goat polyclonal antibody raised against synthetic peptide of CKB.

Immunogen A synthetic peptide corresponding to human CKB.

Sequence C-KPSDEHKTDLNPDN

Host Goat

Theoretical MW (kDa) 42.6

Reactivity Human

Form Liquid

Purification Antigen affinity purification

Concentration 0.5 mg/mL

Quality Control Testing Antibody Reactive Against Synthetic Peptide.

Recommend Usage
 ELISA (1:2000)
 Western Blot (0.1-0.3 ug/mL)
 The optimal working dilution should be determined by the end user.

Storage Buffer	In Tris saline, pH 7.3 (0.5% BSA, 0.02% sodium azide)
Storage Instruction	Store at -20°C. Aliquot to avoid repeated freezing and thawing.
Note	This product contains sodium azide: a POISONOUS AND HAZARDOUS SUBSTANCE which should be handled by trained staff only.

Applications

- Western Blot (Tissue lysate)

CKB polyclonal antibody (Cat # PAB6995) (0.1 ug/mL) staining of human brain lysate (35 ug protein in RIPA buffer). Primary incubation was 1 hour. Detected by chemiluminescence.

- Enzyme-linked Immunoabsorbent Assay

Gene Info — CKB

Entrez GeneID	1152
Protein Accession#	NP_001814.2
Gene Name	CKB
Gene Alias	B-CK, CKBB
Gene Description	creatine kinase, brain
Omim ID	123280
Gene Ontology	Hyperlink
Gene Summary	The protein encoded by this gene is a cytoplasmic enzyme involved in energy homeostasis. The encoded protein reversibly catalyzes the transfer of phosphate between ATP and various phosphogens such as creatine phosphate. It acts as a homodimer in brain as well as in other tissues, and as a heterodimer with a similar muscle isozyme in heart. The encoded protein is a member of the ATP:guanido phosphotransferase protein family. A pseudogene of this gene has been characterized. [provided by RefSeq]
Other Designations	brain creatine kinase creatine kinase B-chain creatine kinase-B

Publication Reference

- [Altered expression and localization of creatine kinase B, heterogeneous nuclear ribonucleoprotein F, and high mobility group box 1 protein in the nuclear matrix associated with colon cancer.](#)

Balasubramani M, Day BW, Schoen RE, Getzenberg RH.

Cancer Research 2006 Jan; 66(2):763.

Application: WB-Ce, WB-Ti, Human, CaCo-2 cells, Human colon, liver tumors

Pathway

- [Arginine and proline metabolism](#)
- [Metabolic pathways](#)

Disease

- [Macular Degeneration](#)