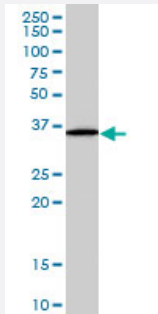


RNF115 polyclonal antibody

Catalog # PAB6979 Size 100 ug

Applications



Western Blot (Cell lysate)

RNF115 polyclonal antibody (Cat # PAB6979) (0.3 ug/mL) staining of HepG2 cell lysate (35 ug protein in RIPA buffer). Primary incubation was 1 hour. Detected by chemiluminescence.

Specification

Product Description Goat polyclonal antibody raised against synthetic peptide of RNF115.

Immunogen A synthetic peptide corresponding to human RNF115.

Sequence C-DQDNRRANERGHQTH

Host Goat

Theoretical MW (kDa) 33.7

Reactivity Human

Form Liquid

Purification Antigen affinity purification

Concentration 0.5 mg/mL

Quality Control Testing Antibody Reactive Against Synthetic Peptide.

Recommend Usage
ELISA (1:32000)
Western Blot (0.3-1 ug/mL)
The optimal working dilution should be determined by the end user.

Storage Buffer	In Tris saline, pH 7.3 (0.5% BSA, 0.02% sodium azide)
Storage Instruction	Store at -20°C. Aliquot to avoid repeated freezing and thawing.
Note	This product contains sodium azide: a POISONOUS AND HAZARDOUS SUBSTANCE which should be handled by trained staff only.

Applications

- Western Blot (Cell lysate)

RNF115 polyclonal antibody (Cat # PAB6979) (0.3 ug/mL) staining of HepG2 cell lysate (35 ug protein in RIPA buffer). Primary incubation was 1 hour. Detected by chemiluminescence.

- Enzyme-linked Immunoabsorbent Assay

Gene Info — RNF115

Entrez GeneID	27246
Protein Accession#	NP_055270.1
Gene Name	RNF115
Gene Alias	BCA2, ZNF364
Gene Description	ring finger protein 115
Gene Ontology	Hyperlink
Other Designations	OTTHUMP00000015602 Rabring 7 zinc finger protein 364

Publication Reference

- [A novel RING-type ubiquitin ligase breast cancer-associated gene 2 correlates with outcome in invasive breast cancer.](#)

Burger AM, Gao Y, Amemiya Y, Kahn HJ, Kitching R, Yang Y, Sun P, Narod SA, Hanna WM, Seth AK.
Cancer Research 2005 Nov; 65(22):1040.

Application: IP, IS, IHC-P, WB-Ce, WB-Tr, Human, MCF-7, T47D cells, Breast tumors

Disease

- [Tobacco Use Disorder](#)