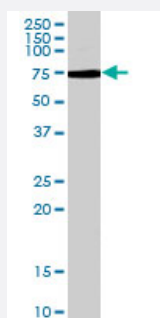


ADRBK1 polyclonal antibody

Catalog # PAB6974

Size 100 ug

Applications



Western Blot (Cell lysate)

ADRBK1 polyclonal antibody (Cat # PAB6974) (0.3 ug/mL) staining of Daudi cell lysate (35 ug protein in RIPA buffer). Primary incubation was 1 hour. Detected by chemiluminescence.

Specification

Product Description Goat polyclonal antibody raised against synthetic peptide of ADRBK1.

Immunogen A synthetic peptide corresponding to human ADRBK1.

Sequence C-RDAYREAQQLVQR

Host Goat

Theoretical MW (kDa) 79.7

Reactivity Human

Form Liquid

Purification Antigen affinity purification

Concentration 0.5 mg/mL

Quality Control Testing Antibody Reactive Against Synthetic Peptide.

Recommend Usage
ELISA (1:16000)
Western Blot (0.3-1 ug/mL)
The optimal working dilution should be determined by the end user.

Storage Buffer	In Tris saline, pH 7.3 (0.5% BSA, 0.02% sodium azide)
Storage Instruction	Store at -20°C. Aliquot to avoid repeated freezing and thawing.
Note	This product contains sodium azide: a POISONOUS AND HAZARDOUS SUBSTANCE which should be handled by trained staff only.

Applications

- Western Blot (Cell lysate)

ADRBK1 polyclonal antibody (Cat # PAB6974) (0.3 ug/mL) staining of Daudi cell lysate (35 ug protein in RIPA buffer). Primary incubation was 1 hour. Detected by chemiluminescence.

- Enzyme-linked Immunoabsorbent Assay

Gene Info — ADRBK1

Entrez GeneID	156
Protein Accession#	NP_001610.1
Gene Name	ADRBK1
Gene Alias	BARK1, BETA-ARK1, FLJ16718, GRK2
Gene Description	adrenergic, beta, receptor kinase 1
Omim ID	109635
Gene Ontology	Hyperlink
Gene Summary	The product of this gene phosphorylates the beta-2-adrenergic receptor and appears to mediate agonist-specific desensitization observed at high agonist concentrations. This protein is an ubiquitous cytosolic enzyme that specifically phosphorylates the activated form of the beta-adrenergic and related G-protein-coupled receptors. Abnormal coupling of beta-adrenergic receptor to G protein is involved in the pathogenesis of the failing heart. [provided by RefSeq]
Other Designations	beta adrenergic receptor kinase 1

Publication Reference

- [Elevated myocardial and lymphocyte GRK2 expression and activity in human heart failure.](#)

Iaccarino G, Barbato E, Cipolletta E, De Amicis V, Margulies KB, Leosco D, Trimarco B, Koch WJ.

European Heart Journal. 2005 Sep; 26(17):1752.

Application: Func, IP-WB, Human, Cardiac

Pathway

- [Chemokine signaling pathway](#)
- [Endocytosis](#)

Disease

- [Anorexia Nervosa](#)
- [Bulimia](#)
- [Cardiovascular Diseases](#)
- [Diabetes Mellitus](#)
- [Edema](#)
- [Genetic Predisposition to Disease](#)