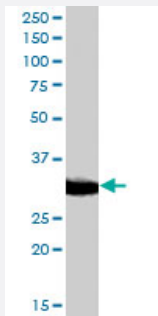


EN2 polyclonal antibody

Catalog # PAB6967 Size 100 ug

Applications



Western Blot (Tissue lysate)

EN2 polyclonal antibody (Cat # PAB6967) (0.5 ug/mL) staining of mouse brain lysate (35 ug protein in RIPA buffer). Primary incubation was 1 hour. Detected by chemiluminescence.

Specification

Product Description Goat polyclonal antibody raised against synthetic peptide of EN2.

Immunogen A synthetic peptide corresponding to human EN2.

Sequence C-NHSTTAKEGKSDSE

Host Goat

Theoretical MW (kDa) 34.2

Reactivity Rat

Form Liquid

Purification Antigen affinity purification

Concentration 0.5 mg/mL

Quality Control Testing Antibody Reactive Against Synthetic Peptide.

Recommend Usage
 ELISA (1:2000)
 Western Blot (0.5-1.5 ug/mL)
 The optimal working dilution should be determined by the end user.

Storage Buffer	In Tris saline, pH 7.3 (0.5% BSA, 0.02% sodium azide)
Storage Instruction	Store at -20°C. Aliquot to avoid repeated freezing and thawing.
Note	This product contains sodium azide: a POISONOUS AND HAZARDOUS SUBSTANCE which should be handled by trained staff only.

Applications

- Western Blot (Tissue lysate)

EN2 polyclonal antibody (Cat # PAB6967) (0.5 ug/mL) staining of mouse brain lysate (35 ug protein in RIPA buffer). Primary incubation was 1 hour. Detected by chemiluminescence.

- Enzyme-linked Immunoabsorbent Assay

Gene Info — EN2

Entrez GeneID	2020
Protein Accession#	NP_001418.2
Gene Name	EN2
Gene Alias	AUTS1, AUTS10
Gene Description	engrailed homeobox 2
Omim ID	131310 611016
Gene Ontology	Hyperlink
Gene Summary	Homeobox-containing genes are thought to have a role in controlling development. In Drosophila, the 'engrailed' (en) gene plays an important role during development in segmentation, where it is required for the formation of posterior compartments. Different mutations in the mouse homologs, En1 and En2, produced different developmental defects that frequently are lethal. The human engrailed homologs 1 and 2 encode homeodomain-containing proteins and have been implicated in the control of pattern formation during development of the central nervous system. [provided by RefSeq]
Other Designations	engrailed homolog 2 engrailed-2

Publication Reference

- [Support for the homeobox transcription factor gene ENGRAILED 2 as an autism spectrum disorder susceptibility locus.](#)

Benayed R, Gharani N, Rossman I, Mancuso V, Lazar G, Kamdar S, Bruse SE, Tischfield S, Smith BJ, Zimmerman RA, Diccio-Bloom E, Brzustowicz LM, Millonig JH.

American Journal of Human Genetics 2005 Nov; 77(5):851.

Application: ICC, Rat, Rat cortical cells

Disease

- [Autistic Disorder](#)
- [Child Development Disorders](#)
- [Genetic Predisposition to Disease](#)
- [Parkinson disease](#)