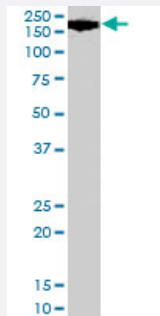


# ARHGEF5 polyclonal antibody

Catalog # PAB6963      Size 100 ug

## Applications



### Western Blot (Cell lysate)

ARHGEF5 polyclonal antibody (Cat # PAB6963) (0.1 ug/mL) staining of HeLa Lysate (35 ug protein in RIPA buffer). Primary incubation was 1 hour. Detected by chemiluminescence.

## Specification

**Product Description** Goat polyclonal antibody raised against synthetic peptide of ARHGEF5.

**Immunogen** A synthetic peptide corresponding to human ARHGEF5.

**Sequence** C-DKEIDQNSQQEE

**Host** Goat

**Theoretical MW (kDa)** 177

**Reactivity** Human

**Form** Liquid

**Purification** Antigen affinity purification

**Concentration** 0.5 mg/mL

**Quality Control Testing** Antibody Reactive Against Synthetic Peptide.

**Recommend Usage**  
 ELISA (1:16000)  
 Western Blot (0.1-0.3 ug/mL)  
 The optimal working dilution should be determined by the end user.

Storage Buffer	In Tris saline, pH 7.3 (0.5% BSA, 0.02% sodium azide)
Storage Instruction	Store at -20°C. Aliquot to avoid repeated freezing and thawing.
Note	This product contains sodium azide: a POISONOUS AND HAZARDOUS SUBSTANCE which should be handled by trained staff only.

## Applications

- Western Blot (Cell lysate)

ARHGEF5 polyclonal antibody (Cat # PAB6963) (0.1 ug/mL) staining of HeLa Lysate (35 ug protein in RIPA buffer). Primary incubation was 1 hour. Detected by chemiluminescence.

- Enzyme-linked Immunoabsorbent Assay

## Gene Info — ARHGEF5

Entrez GeneID	<a href="#">7984</a>
Protein Accession#	<a href="#">NP_005426.2</a>
Gene Name	ARHGEF5
Gene Alias	DKFZp686N1969, GEF5, P60, TIM, TIM1
Gene Description	Rho guanine nucleotide exchange factor (GEF) 5
Omim ID	<a href="#">600888</a>
Gene Ontology	<a href="#">Hyperlink</a>
Gene Summary	Rho GTPases play a fundamental role in numerous cellular processes initiated by extracellular stimuli that work through G protein coupled receptors. The encoded protein may form a complex with G proteins and stimulate Rho-dependent signals. This protein may be involved in the control of cytoskeletal organization. [provided by RefSeq]
Other Designations	guanine nucleotide regulatory protein TIM rho guanine nucleotide exchange factor 5 transforming immortalized mammary oncogene

## Publication Reference

- [Expression and molecular characterization of alternative transcripts of the ARHGEF5/TIM oncogene specific for human breast cancer.](#)

Debily MA, Camarca A, Ciullo M, Mayer C, El Marhomy S, Ba I, Jalil A, Anzisi A, Guardiola J, Piatier-Tonneau D.

Human Molecular Genetics 2004 Feb; 13(3):323.

## Disease

- [Cardiovascular Diseases](#)
- [Diabetes Mellitus](#)
- [Edema](#)