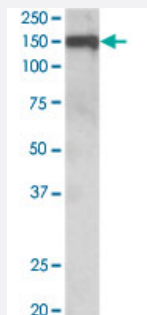


OMG polyclonal antibody

Catalog # PAB6956 Size 100 ug

Applications



Western Blot (Tissue lysate)

OMG polyclonal antibody (Cat # PAB6956) (0.1 ug/mL) staining of human amygdala lysate (35 ug protein in RIPA buffer). Primary incubation was 1 hour. Detected by chemiluminescence.

Specification

Product Description	Goat polyclonal antibody raised against synthetic peptide of OMG.
Immunogen	A synthetic peptide corresponding to internal region of human OMG.
Sequence	C-KVTKIPKQYRTKE
Host	Goat
Theoretical MW (kDa)	49.6
Reactivity	Human
Form	Liquid
Purification	Antigen affinity purification
Concentration	0.5 mg/mL
Recommend Usage	ELISA (1:128000) Western Blot (0.1-0.3 ug/mL) The optimal working dilution should be determined by the end user.
Storage Buffer	In Tris saline, pH 7.3 (0.5% BSA, 0.02% sodium azide)

Storage Instruction

Store at -20°C.
Aliquot to avoid repeated freezing and thawing.

Note

This product contains sodium azide: a POISONOUS AND HAZARDOUS SUBSTANCE which should be handled by trained staff only.

Applications

- Western Blot (Tissue lysate)

OMG polyclonal antibody (Cat # PAB6956) (0.1 ug/mL) staining of human amygdala lysate (35 ug protein in RIPA buffer). Primary incubation was 1 hour. Detected by chemiluminescence.

- Enzyme-linked Immunoabsorbent Assay

Gene Info — OMG

Entrez GeneID[4974](#)**Protein Accession#**[NP_002535.3](#)**Gene Name**

OMG

Gene Alias

OMGP

Gene Description

oligodendrocyte myelin glycoprotein

Omim ID[164345](#)**Gene Ontology**[Hyperlink](#)**Other Designations**

-

Publication Reference

- [Experience-driven plasticity of visual cortex limited by myelin and Nogo receptor.](#)

McGee AW, Yang Y, Fischer QS, Daw NW, Strittmatter SM.

Science 2005 Sep; 309(5744):2222.

Disease

- [Autistic Disorder](#)
- [Mental Retardation](#)
- [Neurofibromatosis](#)