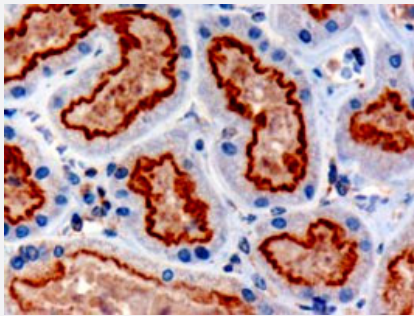


# IFT88 polyclonal antibody

Catalog # PAB6947      Size 100 ug

## Applications



### Immunohistochemistry (Formalin/PFA-fixed paraffin-embedded sections)

IFT88 polyclonal antibody (Cat # PAB6947) (3 ug/mL) staining of paraffin embedded human kidney. Microwaved antigen retrieval with Tris/EDTA buffer pH9, HRP-staining.

## Specification

<b>Product Description</b>	Goat polyclonal antibody raised against synthetic peptide of IFT88.
<b>Immunogen</b>	A synthetic peptide corresponding to C-terminus of human IFT88.
<b>Sequence</b>	C-KKRIDEDDFADEE
<b>Host</b>	Goat
<b>Theoretical MW (kDa)</b>	94.3, 93.2
<b>Reactivity</b>	Human, Mouse
<b>Specificity</b>	This antibody is expected to recognize both reported isoforms (NP_783195.2, NP_006522.2).
<b>Form</b>	Liquid
<b>Purification</b>	Antigen affinity purification
<b>Concentration</b>	0.5 mg/mL
<b>Recommend Usage</b>	ELISA (1:32000) Immunohistochemistry (Formalin/PFA-fixed paraffin-embedded sections) (3 ug/mL) The optimal working dilution should be determined by the end user.

Storage Buffer	In Tris saline, pH 7.3 (0.5% BSA, 0.02% sodium azide)
Storage Instruction	Store at -20°C. Aliquot to avoid repeated freezing and thawing.
Note	This product contains sodium azide: a POISONOUS AND HAZARDOUS SUBSTANCE which should be handled by trained staff only.

## Applications

- Immunohistochemistry (Formalin/PFA-fixed paraffin-embedded sections)

IFT88 polyclonal antibody (Cat # PAB6947) (3 ug/mL) staining of paraffin embedded human kidney. Microwaved antigen retrieval with Tris/EDTA buffer pH9, HRP-staining.

- Immunofluorescence
- Enzyme-linked Immunoabsorbent Assay

## Gene Info — IFT88

Entrez GeneID	<a href="#">8100</a>
Protein Accession#	<a href="#">NP_783195.2;NP_006522.2</a>
Gene Name	IFT88
Gene Alias	D13S1056E, DAF19, MGC26259, RP11-172H24.2, TG737, TTC10, hTg737
Gene Description	intraflagellar transport 88 homolog (Chlamydomonas)
Omim ID	<a href="#">600595</a>
Gene Ontology	<a href="#">Hyperlink</a>
Gene Summary	This gene encodes a member of the tetratrico peptide repeat (TPR) family. Mutations of a similar gene in mouse can cause polycystic kidney disease. Two transcript variants encoding distinct isoforms have been identified for this gene. [provided by RefSeq]
Other Designations	TPR repeat protein 10 intraflagellar transport 88 homolog polaris probe hTg737 (polycystic kidney disease, autosomal recessive) recessive polycystic kidney disease protein Tg737 homolog tetratrico peptide repeat domain 10

## Publication Reference

- [Essential role of nephrocystin in photoreceptor intraflagellar transport in mouse.](#)

Jiang ST, Chiou YY, Wang E, Chien YL, Ho HH, Tsai FJ, Lin CY, Tsai SP, Li H.

Human Molecular Genetics 2009 May; 18(9):1566.

Application: IF, Mouse, Retinal

- [News focus: Betting on cilia.](#)

Gretchen Vogel.

Science 2005 Oct; 310(5746):216.

## Disease

- [Tobacco Use Disorder](#)