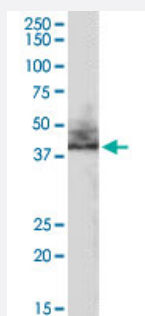


SLC9A3R2 polyclonal antibody

Catalog # PAB6889

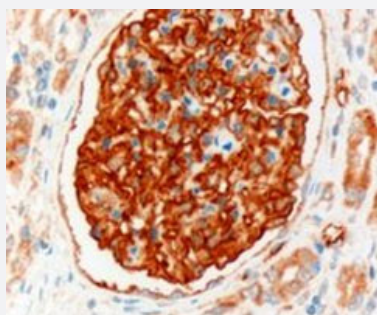
Size 100 ug

Applications



Western Blot (Tissue lysate)

SLC9A3R2 polyclonal antibody (Cat # PAB6889) (0.3 ug/mL) staining of human kidney lysate (35 ug protein in RIPA buffer). Primary incubation was 1 hour. Detected by chemiluminescence.



Immunohistochemistry (Formalin/PFA-fixed paraffin-embedded sections)

SLC9A3R2 polyclonal antibody (Cat # PAB6889, 3 ug/mL) staining of paraffin embedded human kidney. Microwaved antigen retrieval with Tris/EDTA buffer pH9, HRP-staining.

Specification

Product Description	Goat polyclonal antibody raised against synthetic peptide of SLC9A3R2.
Immunogen	A synthetic peptide corresponding to human SLC9A3R2.
Sequence	C-DGSAWKQDPFQ
Host	Goat
Theoretical MW (kDa)	37.4
Reactivity	Human

Specificity	This variant has an extra insertion of 11 residues compared to NP_004776.3. The immunizing peptide represents this insertion.
Form	Liquid
Purification	Antigen affinity purification
Concentration	0.5 mg/mL
Quality Control Testing	Antibody Reactive Against Synthetic Peptide.
Recommend Usage	ELISA (1:32000) Western blot (0.3-1 ug/mL) Immunohistochemistry (Formalin/PFA-fixed paraffin-embedded sections) (1-2 ug/mL) The optimal working dilution should be determined by the end user.
Storage Buffer	In Tris saline, pH 7.3 (0.5% BSA, 0.02% sodium azide)
Storage Instruction	Store at -20°C. Aliquot to avoid repeated freezing and thawing.
Note	This product contains sodium azide: a POISONOUS AND HAZARDOUS SUBSTANCE which should be handled by trained staff only.

Applications

- Western Blot (Tissue lysate)

SLC9A3R2 polyclonal antibody (Cat # PAB6889) (0.3 ug/mL) staining of human kidney lysate (35 ug protein in RIPA buffer). Primary incubation was 1 hour. Detected by chemiluminescence.

- Immunohistochemistry (Formalin/PFA-fixed paraffin-embedded sections)

SLC9A3R2 polyclonal antibody (Cat # PAB6889, 3 ug/mL) staining of paraffin embedded human kidney. Microwaved antigen retrieval with Tris/EDTA buffer pH9, HRP-staining.

- Enzyme-linked Immunoabsorbent Assay

Gene Info — SLC9A3R2

Entrez GeneID	9351
Protein Accession#	BAA33216.1
Gene Name	SLC9A3R2
Gene Alias	E3KARP, MGC104639, NHE3RF2, NHERF-2, NHERF2, OCTS2, SIP-1, SIP1, TKA-1

Gene Description	solute carrier family 9 (sodium/hydrogen exchanger), member 3 regulator 2
Omim ID	606553
Gene Ontology	Hyperlink
Gene Summary	NHE3 (SLC9A3; MIM 182307) is a sodium/hydrogen exchanger in the brush border membrane of the proximal tubule, small intestine, and colon that plays a major role in transepithelial sodium absorption. SLC9A3R2, as well as SLC9A3R1 (MIM 604990) and protein kinase A phosphorylation, may play a role in NHE3 regulation.[supplied by OMIM]
Other Designations	sodium/hydrogen exchanger solute carrier family 9 (sodium/hydrogen exchanger), isoform 3 regulator 2 solute carrier family 9 (sodium/hydrogen exchanger), isoform 3 regulatory factor 2 solute carrier family 9 isoform 3 regulator 2

Publication Reference

- [cGMP inhibition of Na⁺/H⁺ antiporter 3 \(NHE3\) requires PDZ domain adapter NHERF2, a broad specificity protein kinase G-anchoring protein.](#)

Cha B, Kim JH, Hut H, Hogema BM, Nadarja J, Zizak M, Cavet M, Lee-Kwon W, Lohmann SM, Smolenski A, Tse CM, Yun C, de Jonge HR, Donowitz M.

The Journal of Biological Chemistry 2005 Apr; 280(17):16642.

Application: IP, WB, Mouse, PS120 fibroblasts