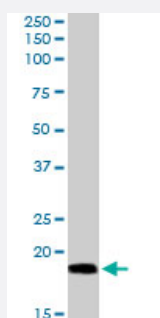


BAALC polyclonal antibody

Catalog # PAB6887

Size 100 ug

Applications



Western Blot (Tissue lysate)

BAALC polyclonal antibody (Cat # PAB6887) (0.03 ug/mL) staining of mouse brain lysate (35 ug protein in RIPA buffer). Primary incubation was 1 hour. Detected by chemiluminescence.

Specification

Product Description	Goat polyclonal antibody raised against synthetic peptide of BAALC.
Immunogen	A synthetic peptide corresponding to human BAALC.
Sequence	C-KQNGGLQTTEAKRDAK
Host	Goat
Theoretical MW (kDa)	15.6
Reactivity	Human, Mouse
Specificity	This antibody is expected to recognize isoform 1 (NP_079088.1) only.
Form	Liquid
Purification	Antigen affinity purification
Concentration	0.5 mg/mL
Quality Control Testing	Antibody Reactive Against Synthetic Peptide.

Recommend Usage	ELISA (1:64000) Western Blot (0.03-0.1 ug/mL) The optimal working dilution should be determined by the end user.
Storage Buffer	In Tris saline, pH 7.3 (0.5% BSA, 0.02% sodium azide)
Storage Instruction	Store at -20°C. Aliquot to avoid repeated freezing and thawing.
Note	This product contains sodium azide: a POISONOUS AND HAZARDOUS SUBSTANCE which should be handled by trained staff only.

Applications

- Western Blot (Tissue lysate)

BAALC polyclonal antibody (Cat # PAB6887) (0.03 ug/mL) staining of mouse brain lysate (35 ug protein in RIPA buffer). Primary incubation was 1 hour. Detected by chemiluminescence.

- Enzyme-linked Immunoabsorbent Assay

Gene Info — BAALC

Entrez GeneID	79870
Protein Accession#	NP_079088.1
Gene Name	BAALC
Gene Alias	FLJ12015
Gene Description	brain and acute leukemia, cytoplasmic
Omim ID	606602
Gene Ontology	Hyperlink
Gene Summary	This gene was identified by gene expression studies in patients with acute myeloid leukemia (AML). The gene is conserved among mammals and is not found in lower organisms. Tissues that express this gene develop from the neuroectoderm. Multiple alternatively spliced transcript variants that encode different proteins have been described for this gene; however, some of the transcript variants are found only in AML cell lines. [provided by RefSeq]
Other Designations	-

Publication Reference

- [Baalc, a marker of mesoderm and muscle.](#)

Satoskar AA, Tanner SM, Weinstein M, Qualman SJ, de la Chapelle A.

Gene Expression Patterns 2005 Apr; 5(4):463.

Application: IF, IHC-P, Mouse, Embryo