

CBX3 polyclonal antibody

Catalog # PAB6885

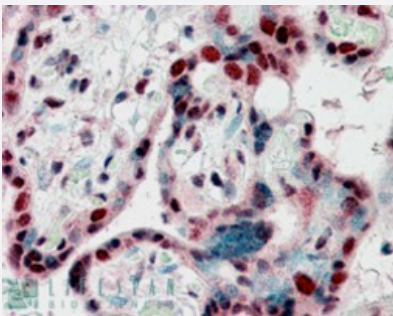
Size 100 ug

Applications



Western Blot (Cell lysate)

CBX3 polyclonal antibody (Cat # PAB6885) (0.3 ug/mL) staining of A-431 lysate (35 ug protein in RIPA buffer). Primary incubation was 1 hour. Detected by chemiluminescence.



Immunohistochemistry (Formalin/PFA-fixed paraffin-embedded sections)

CBX3 polyclonal antibody (Cat # PAB6885) (2.5 ug/mL) staining of paraffin embedded Human Placenta. Steamed antigen retrieval with citrate buffer pH 6, AP-staining.

Specification

Product Description	Goat polyclonal antibody raised against synthetic peptide of CBX3.
Immunogen	A synthetic peptide corresponding to human CBX3.
Sequence	C-EAFLNSQKAGKEKD
Host	Goat
Theoretical MW (kDa)	20.8
Reactivity	Human, Mouse

Specificity	This antibody is not expected to cross-react with HP1-alpha and HP1-beta. NP_009207.2 and NP_057671.2 represent same protein.
Form	Liquid
Purification	Antigen affinity purification
Concentration	0.5 mg/mL
Quality Control Testing	Antibody Reactive Against Synthetic Peptide.
Recommend Usage	ELISA (1:32000) Western blot (0.3-1.0 ug/mL) Immunohistochemistry (Formalin/PFA-fixed paraffin-embedded sections) (2-3 ug/mL) The optimal working dilution should be determined by the end user.
Storage Buffer	In Tris saline, pH 7.3 (0.5% BSA, 0.02% sodium azide)
Storage Instruction	Store at -20°C. Aliquot to avoid repeated freezing and thawing.
Note	This product contains sodium azide: a POISONOUS AND HAZARDOUS SUBSTANCE which should be handled by trained staff only.

Applications

- Western Blot (Cell lysate)

CBX3 polyclonal antibody (Cat # PAB6885) (0.3 ug/mL) staining of A-431 lysate (35 ug protein in RIPA buffer). Primary incubation was 1 hour. Detected by chemiluminescence.

- Immunohistochemistry (Formalin/PFA-fixed paraffin-embedded sections)

CBX3 polyclonal antibody (Cat # PAB6885) (2.5 ug/mL) staining of paraffin embedded Human Placenta. Steamed antigen retrieval with citrate buffer pH 6, AP-staining.

- Enzyme-linked Immunoabsorbent Assay

Gene Info — CBX3

Entrez GeneID	11335
Protein Accession#	NP_009207.2;NP_057671.2
Gene Name	CBX3
Gene Alias	HECH, HP1-GAMMA, HP1Hs-gamma

Gene Description	chromobox homolog 3 (HP1 gamma homolog, Drosophila)
Omim ID	604477
Gene Ontology	Hyperlink
Gene Summary	At the nuclear envelope, the nuclear lamina and heterochromatin are adjacent to the inner nuclear membrane. The protein encoded by this gene binds DNA and is a component of heterochromatin. This protein also can bind lamin B receptor, an integral membrane protein found in the inner nuclear membrane. The dual binding functions of the encoded protein may explain the association of heterochromatin with the inner nuclear membrane. Two transcript variants encoding the same protein but differing in the 5' UTR, have been found for this gene. [provided by RefSeq]
Other Designations	HP1 gamma homolog OTTHUMP00000024529 OTTHUMP00000122519 chromobox homolog 3 heterochromatin protein HP1 gamma heterochromatin-like protein 1

Publication Reference

- [Histone H3 lysine 9 methylation and HP1gamma are associated with transcription elongation through mammalian chromatin.](#)

Vakoc CR, Mandat SA, Olenchok BA, Blobel GA.

Molecular Cell 2005 Aug; 19(3):381.