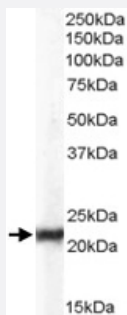


# CBX5 polyclonal antibody

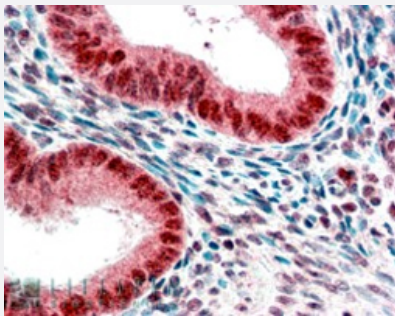
Catalog # PAB6883      Size 100 ug

## Applications



### Western Blot (Cell lysate)

CBX5 polyclonal antibody (Cat # PAB6883) (0.03 ug/mL) staining of HeLa lysate (35 ug protein in RIPA buffer). Primary incubation was 1 hour. Detected by chemiluminescence.



### Immunohistochemistry (Formalin/PFA-fixed paraffin-embedded sections)

CBX5 polyclonal antibody (Cat # PAB6883) (2.5 ug/mL) staining of paraffin embedded human uterus. Steamed antigen retrieval with citrate buffer pH 6, AP-staining.

## Specification

Product Description	Goat polyclonal antibody raised against synthetic peptide of CBX5.
Immunogen	A synthetic peptide corresponding to human CBX5.
Sequence	C-NKRKSNFSNSADDIK
Host	Goat
Theoretical MW (kDa)	22.2
Reactivity	Human
Form	Liquid

Purification	Antigen affinity purification
Concentration	0.5 mg/mL
Quality Control Testing	Antibody Reactive Against Synthetic Peptide.
Recommend Usage	ELISA (1:128000) Western blot (0.03-0.1 ug/mL) Immunohistochemistry (Formalin/PFA-fixed paraffin-embedded sections) (2-3 ug/mL) The optimal working dilution should be determined by the end user.
Storage Buffer	In Tris saline, pH 7.3 (0.5% BSA, 0.02% sodium azide)
Storage Instruction	Store at -20°C. Aliquot to avoid repeated freezing and thawing.
Note	This product contains sodium azide: a POISONOUS AND HAZARDOUS SUBSTANCE which should be handled by trained staff only.

## Applications

- Western Blot (Cell lysate)

CBX5 polyclonal antibody (Cat # PAB6883) (0.03 ug/mL) staining of HeLa lysate (35 ug protein in RIPA buffer). Primary incubation was 1 hour. Detected by chemiluminescence.

- Immunohistochemistry (Formalin/PFA-fixed paraffin-embedded sections)

CBX5 polyclonal antibody (Cat # PAB6883) (2.5 ug/mL) staining of paraffin embedded human uterus. Steamed antigen retrieval with citrate buffer pH 6, AP-staining.

- Enzyme-linked Immunoabsorbent Assay

## Gene Info — CBX5

Entrez GeneID	<a href="#">23468</a>
Protein Accession#	<a href="#">NP_036249.1</a>
Gene Name	CBX5
Gene Alias	HP1, HP1A
Gene Description	chromobox homolog 5 (HP1 alpha homolog, Drosophila)
Omim ID	<a href="#">604478</a>

## Gene Ontology

[Hyperlink](#)

## Gene Summary

This gene encodes a highly conserved nonhistone protein, which is a member of the heterochromatin protein family. The protein is enriched in the heterochromatin and associated with centromeres. The protein has a single N-terminal chromodomain which can bind to histone proteins via methylated lysine residues, and a C-terminal chromo shadow-domain (CSD) which is responsible for the homodimerization and interaction with a number of chromatin-associated nonhistone proteins. The encoded product is involved in the formation of functional kinetochore through interaction with essential kinetochore proteins. The gene has a pseudogene located on chromosome 3. Multiple alternatively spliced variants, encoding the same protein, have been identified. [provided by RefSeq]

## Other Designations

HP1-ALPHA|HP1Hs alpha|antigen p25|heterochromatin protein 1 homolog alpha|heterochromatin protein 1-alpha

## Publication Reference

- [Recruitment of Tat to heterochromatin protein HP1 via interaction with CTIP2 inhibits human immunodeficiency virus type 1 replication in microglial cells.](#)

Rohr O, Lecestre D, Chasserot-Golaz S, Marban C, Avram D, Aunis D, Leid M, Schaeffer E.

Journal of Virology 2003 May; 77(9):5415.

Application: IF, IP, WB-Tr, Human, Microglial cells