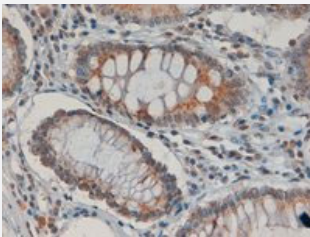


# IDO1 polyclonal antibody

Catalog # PAB6880      Size 100 ug

## Applications



### Immunohistochemistry (Formalin/PFA-fixed paraffin-embedded sections)

IDO1 polyclonal antibody (Cat # PAB6880) (4 ug/mL) staining of paraffin embedded human colon. Steamed antigen retrieval with citrate buffer pH 6, HRP-staining.

## Specification

<b>Product Description</b>	Goat polyclonal antibody raised against synthetic peptide of IDO1.
<b>Immunogen</b>	A synthetic peptide corresponding to internal region of human IDO1.
<b>Sequence</b>	CVLANWKKKDPNK
<b>Host</b>	Goat
<b>Theoretical MW (kDa)</b>	45.3
<b>Reactivity</b>	Human
<b>Form</b>	Liquid
<b>Purification</b>	Antigen affinity purification
<b>Concentration</b>	0.5 mg/mL
<b>Recommend Usage</b>	ELISA (1:8000) Immunohistochemistry (Formalin/PFA-fixed paraffin-embedded sections) (4-6 ug/mL) The optimal working dilution should be determined by the end user.
<b>Storage Buffer</b>	In Tris saline, pH 7.3 (0.5% BSA, 0.02% sodium azide)

**Storage Instruction**

Store at -20°C.  
Aliquot to avoid repeated freezing and thawing.

**Note**

This product contains sodium azide: a POISONOUS AND HAZARDOUS SUBSTANCE which should be handled by trained staff only.

## Applications

- Immunohistochemistry (Formalin/PFA-fixed paraffin-embedded sections)

IDO1 polyclonal antibody (Cat # PAB6880) (4 ug/mL) staining of paraffin embedded human colon. Steamed antigen retrieval with citrate buffer pH 6, HRP-staining.

- Enzyme-linked Immunoabsorbent Assay

## Gene Info — IDO1

**Entrez GeneID**[3620](#)**Protein Accession#**[NP\\_002155.1](#)**Gene Name**

IDO1

**Gene Alias**

CD107B, IDO, INDO

**Gene Description**

indoleamine 2,3-dioxygenase 1

**Omim ID**[147435](#)**Gene Ontology**[Hyperlink](#)**Gene Summary**

Gamma-interferon (IFNG; MIM 147570) has an antiproliferative effect on many tumor cells and inhibits intracellular pathogens such as Toxoplasma and Chlamydia, at least partly because of the induction of indoleamine 2,3-dioxygenase (INDO; EC 1.13.11.52). This enzyme catalyzes the degradation of the essential amino acid L-tryptophan to N-formyl-kynurenine.[supplied by OMIM]

**Other Designations**

indole 2,3-dioxygenase|indoleamine-pyrrole 2,3 dioxygenase

## Publication Reference

- [GCN2 kinase in T cells mediates proliferative arrest and anergy induction in response to indoleamine 2,3-dioxygenase.](#)

Munn DH, Sharma MD, Baban B, Harding HP, Zhang Y, Ron D, Mellor AL.

Immunity 2005 May; 22(5):633.

## Pathway

- [Metabolic pathways](#)
- [Tryptophan metabolism](#)

## Disease

- [Hepatitis C](#)
- [Multiple Sclerosis](#)
- [Pre-Eclampsia](#)