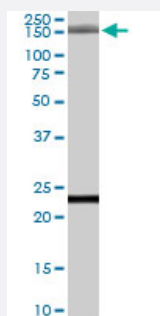


GOLGA3 polyclonal antibody

Catalog # PAB6866

Size 100 ug

Applications



Western Blot (Cell lysate)

GOLGA3 polyclonal antibody (Cat # PAB6866) (0.1 ug/mL) staining of HeLa lysate (35 ug protein in RIPA buffer). Primary incubation was 1 hour. Detected by chemiluminescence.

Specification

Product Description Goat polyclonal antibody raised against synthetic peptide of GOLGA3.

Immunogen A synthetic peptide corresponding to human GOLGA3.

Sequence C-HSQSRASKEGPGE

Host Goat

Theoretical MW (kDa) 167

Reactivity Human

Form Liquid

Purification Antigen affinity purification

Concentration 0.5 mg/mL

Quality Control Testing Antibody Reactive Against Synthetic Peptide.

Recommend Usage
 ELISA (1:16000)
 Western Blot (0.1-0.3 ug/mL)
 The optimal working dilution should be determined by the end user.

Storage Buffer	In Tris saline, pH 7.3 (0.5% BSA, 0.02% sodium azide)
Storage Instruction	Store at -20°C. Aliquot to avoid repeated freezing and thawing.
Note	This product contains sodium azide: a POISONOUS AND HAZARDOUS SUBSTANCE which should be handled by trained staff only.

Applications

- Western Blot (Cell lysate)

GOLGA3 polyclonal antibody (Cat # PAB6866) (0.1 ug/mL) staining of HeLa lysate (35 ug protein in RIPA buffer). Primary incubation was 1 hour. Detected by chemiluminescence.

- Enzyme-linked Immunoabsorbent Assay

Gene Info — GOLGA3

Entrez GeneID	2802
Protein Accession#	NP_005886.2
Gene Name	GOLGA3
Gene Alias	GCP170, MEA-2
Gene Description	golgi autoantigen, golgin subfamily a, 3
Omim ID	602581
Gene Ontology	Hyperlink

Gene Summary	The Golgi apparatus, which participates in glycosylation and transport of proteins and lipids in the secretory pathway, consists of a series of stacked cisternae (flattened membrane sacs). Interactions between the Golgi and microtubules are thought to be important for the reorganization of the Golgi after it fragments during mitosis. This gene encodes a member of the golgin family of proteins which are localized to the Golgi. Its encoded protein has been postulated to play a role in nuclear transport and Golgi apparatus localization. Several alternatively spliced transcript variants of this gene have been described, but the full-length nature of these variants has not been determined. [provided by RefSeq]
--------------	--

Other Designations	Golgi autoantigen, golgin subfamily a, 3 Golgi complex-associated protein of 170 kD Golgi membrane associated protein Golgi peripheral membrane protein SY2/SY10 protein golgin-160 golgin-165 male enhanced antigen-2
--------------------	--

Publication Reference

- [The NH2-terminal domain of Golgin-160 contains both Golgi and nuclear targeting information.](#)

Hicks SW, Machamer CE.

The Journal of Biological Chemistry 2002 Sep; 277(39):35833.

Application: IF, IP, Human, HeLa cells

Disease

- [Tobacco Use Disorder](#)