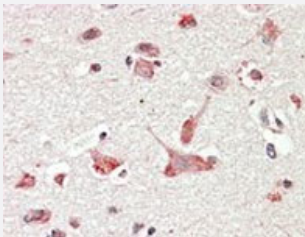


GOLGA6A/GOLGA6B polyclonal antibody

Catalog # PAB6865

Size 100 ug

Applications



Immunohistochemistry (Formalin/PFA-fixed paraffin-embedded sections)

GOLGA6A/GOLGA6B polyclonal antibody (Cat # PAB6865) (3.8 ug/mL) staining of paraffin embedded human cerebral cortex. Steamed antigen retrieval with citrate buffer pH 6, AP-staining.

Specification

Product Description	Goat polyclonal antibody raised against synthetic peptide of GOLGA6A/GOLGA6B.
Immunogen	A synthetic peptide corresponding to internal region of human GOLGA6A/GOLGA6B.
Sequence	C-DLPKEKADGTEQ
Host	Goat
Theoretical MW (kDa)	79.9
Reactivity	Human
Specificity	GeneID 55889 may be a pseudogene, while GeneID 342096 is thought to encode a functional protein.
Form	Liquid
Purification	Antigen affinity purification
Concentration	0.5 mg/mL

Recommend Usage	ELISA (1:1000) Immunohistochemistry (Formalin/PFA-fixed paraffin-embedded sections) (3-6 ug/mL) The optimal working dilution should be determined by the end user.
Storage Buffer	In Tris saline, pH 7.3 (0.5% BSA, 0.02% sodium azide)
Storage Instruction	Store at -20°C. Aliquot to avoid repeated freezing and thawing.
Note	This product contains sodium azide: a POISONOUS AND HAZARDOUS SUBSTANCE which should be handled by trained staff only.

Applications

- Immunohistochemistry (Formalin/PFA-fixed paraffin-embedded sections)

GOLGA6A/GOLGA6B polyclonal antibody (Cat # PAB6865) (3.8 ug/mL) staining of paraffin embedded human cerebral cortex. Steamed antigen retrieval with citrate buffer pH 6, AP-staining.

- Enzyme-linked Immunoabsorbent Assay

Gene Info — GOLGA6B

Entrez GeneID	55889
Protein Accession#	NP_0010.33729.1 (Gene ID : 342096);NP_061122.4 (Gene ID : 55889)
Gene Name	GOLGA6B
Gene Alias	GOLGA
Gene Description	golgi autoantigen, golgin subfamily a, 6B
Gene Ontology	Hyperlink
Gene Summary	This gene is found in a large, low copy repeat sequence or duplicon that is found in multiple copies, which are greater than 90% similar, on chromosome 15. Duplicons are associated with deletions, inversions and other chromosomal rearrangements that underlie genomic disease. This gene is a member of the golgin gene family, whose protein products localize to the Golgi apparatus. The majority of the related gene copies are thought to be transcribed pseudogenes. It is not known whether this gene is a pseudogene or if it encodes a golgin protein. [provided by RefSeq]
Other Designations	Golgin subfamily A member 6B golgin-like protein

Gene Info — GOLGA6A

Entrez GeneID [342096](#)

Protein Accession# [NP_0010.33729.1 \(Gene ID : 342096\);NP_061122.4 \(Gene ID : 55889\)](#)

Gene Name GOLGA6A

Gene Alias FLJ75859, GLP

Gene Description golgi autoantigen, golgin subfamily a, 6

Omim ID [610288](#)

Gene Ontology [Hyperlink](#)

Gene Summary The Golgi apparatus, which participates in glycosylation and transport of proteins and lipids in the secretory pathway, consists of a series of stacked cisternae (flattened membrane sacs). Interactions between the Golgi and microtubules are thought to be important for the reorganization of the Golgi after it fragments during mitosis. The protein encoded by this gene is a member of the golgin family of proteins, whose members localize to the Golgi. This gene is found in a large, low copy repeat sequence or duplcon that is found in multiple copies, that are greather than 90% similar, on chromosome 15. Duplicons are associated with deletions, inversions and other chromosome rearrangements that underlie genomic disease. The protein encoded by this gene is thought to be a functional golgin protein while the majority of the related copies of this gene are thought to be transcribed pseudogenes. [provided by RefSeq]

Other Designations Golgin linked to PML|golgi autoantigen, golgin subfamily a, member 6

Publication Reference

- [Cloning and characterization of a Golgin-related gene from the large-scale polymorphism linked to the PML gene.](#)

Gilles F, Goy A, Remache Y, Manova K, Zelenetz AD.

Genomics 2000 Dec; 70(3):364.