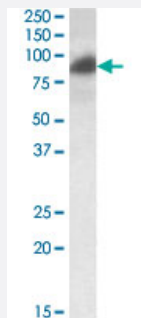


# RAB11FIP1 polyclonal antibody

Catalog # PAB6853

Size 100 ug

## Applications



### Western Blot (Cell lysate)

RAB11FIP1 polyclonal antibody (Cat # PAB6853) (0.2 ug/mL) staining of HeLa lysate (35 ug protein in RIPA buffer). Primary incubation was 1 hour. Detected by chemiluminescence.

## Specification

<b>Product Description</b>	Goat polyclonal antibody raised against synthetic peptide of RAB11FIP1.
<b>Immunogen</b>	A synthetic peptide corresponding to human RAB11FIP1.
<b>Sequence</b>	C-EATKEAKESKKPE
<b>Host</b>	Goat
<b>Theoretical MW (kDa)</b>	71.0, 137
<b>Reactivity</b>	Human
<b>Specificity</b>	This antibody is expected to recognize isoform 1 (NP_079427.3) and isoform 3 (NP_001002814.1).
<b>Form</b>	Liquid
<b>Purification</b>	Antigen affinity purification
<b>Concentration</b>	0.5 mg/mL
<b>Quality Control Testing</b>	Antibody Reactive Against Synthetic Peptide.

<b>Recommend Usage</b>	ELISA (1:16000) The optimal working dilution should be determined by the end user.
<b>Storage Buffer</b>	In Tris saline, pH 7.3 (0.5% BSA, 0.02% sodium azide)
<b>Storage Instruction</b>	Store at -20°C. Aliquot to avoid repeated freezing and thawing.
<b>Note</b>	This product contains sodium azide: a POISONOUS AND HAZARDOUS SUBSTANCE which should be handled by trained staff only.

## Applications

- Western Blot (Cell lysate)

RAB11FIP1 polyclonal antibody (Cat # PAB6853) (0.2 ug/mL) staining of HeLa lysate (35 ug protein in RIPA buffer). Primary incubation was 1 hour. Detected by chemiluminescence.

- Enzyme-linked Immunoabsorbent Assay

## Gene Info — RAB11FIP1

<b>Entrez GeneID</b>	<a href="#">80223</a>
<b>Protein Accession#</b>	<a href="#">NP_079427.3;NP_001002814.1</a>
<b>Gene Name</b>	RAB11FIP1
<b>Gene Alias</b>	DKFZp686E2214, FLJ22524, FLJ22622, MGC78448, NOEL1A, RCP, rab11-FIP1
<b>Gene Description</b>	RAB11 family interacting protein 1 (class I)
<b>Omim ID</b>	<a href="#">608737</a>
<b>Gene Ontology</b>	<a href="#">Hyperlink</a>
<b>Gene Summary</b>	Proteins of the large Rab GTPase family (see RAB1A; MIM 179508) have regulatory roles in the formation, targeting, and fusion of intracellular transport vesicles. RAB11FIP1 is one of many proteins that interact with and regulate Rab GTPases (Hales et al., 2001 [PubMed 11495908]).[supplied by OMIM]
<b>Other Designations</b>	RAB11 coupling protein RAB11 family interacting protein 1 Rab effector protein Rab-interacting recycling protein

## Publication Reference

- [A 1 Mb minimal amplicon at 8p11-12 in breast cancer identifies new candidate oncogenes.](#)

Garcia MJ, Pole JC, Chin SF, Teschendorff A, Naderi A, Ozdag H, Vias M, Kranjac T, Subkhankulova T, Paish C, Ellis I, Brenton JD, Edwards PA, Caldas C.

Oncogene 2005 Aug; 24(33):5235.

## Pathway

- [Endocytosis](#)