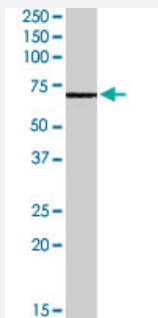


ABCE1 polyclonal antibody

Catalog # PAB6847

Size 100 ug

Applications



Western Blot (Cell lysate)

ABCE1 polyclonal antibody (Cat # PAB6847) (0.3 ug/mL) staining of A-431 lysate (35 ug protein in RIPA buffer). Primary incubation was 1 hour. Detected by chemiluminescence.

Specification

Product Description Goat polyclonal antibody raised against synthetic peptide of ABCE1.

Immunogen A synthetic peptide corresponding to human ABCE1.

Sequence C-KLNSIKDVEQKK

Host Goat

Theoretical MW (kDa) 67.5

Reactivity Human

Form Liquid

Purification Antigen affinity purification

Concentration 0.5 mg/mL

Quality Control Testing Antibody Reactive Against Synthetic Peptide.

Recommend Usage
 ELISA (1:8000)
 Western Blot (0.3-1 ug/mL)
 The optimal working dilution should be determined by the end user.

Storage Buffer	In Tris saline, pH 7.3 (0.5% BSA, 0.02% sodium azide)
Storage Instruction	Store at -20°C. Aliquot to avoid repeated freezing and thawing.
Note	This product contains sodium azide: a POISONOUS AND HAZARDOUS SUBSTANCE which should be handled by trained staff only.

Applications

- Western Blot (Cell lysate)

ABCE1 polyclonal antibody (Cat # PAB6847) (0.3 ug/mL) staining of A-431 lysate (35 ug protein in RIPA buffer). Primary incubation was 1 hour. Detected by chemiluminescence.

- Enzyme-linked Immunoabsorbent Assay

Gene Info — ABCE1

Entrez GeneID	6059
Protein Accession#	NP_002931.1
Gene Name	ABCE1
Gene Alias	ABC38, OABP, RLI, RNASEL1, RNASELI, RNS4I
Gene Description	ATP-binding cassette, sub-family E (OABP), member 1
Omim ID	601213
Gene Ontology	Hyperlink

Gene Summary	The protein encoded by this gene is a member of the superfamily of ATP-binding cassette (ABC) transporters. ABC proteins transport various molecules across extra- and intra-cellular membranes. ABC genes are divided into seven distinct subfamilies (ABC1, MDR/TAP, MRP, ALD, OABP, GCN20, White). This protein is a member of the OABP subfamily. Alternatively referred to as the RNase L inhibitor, this protein functions to block the activity of ribonuclease L. Activation of ribonuclease L leads to inhibition of protein synthesis in the 2-5A/RNase L system, the central pathway for viral interferon action. Two transcript variants encoding the same protein have been found for this gene. [provided by RefSeq]
Other Designations	ATP-binding cassette, sub-family E, member 1 RNase L inhibitor ribonuclease L (2',5'-oligoadenylate synthetase-dependent) inhibitor

Publication Reference

- [Defects in TLR3 expression and RNase L activation lead to decreased MnSOD expression and insulin resistance in muscle cells of obese people.](#)

Fabre O, Breuker C, Amouzou C, Salehzada T, Kitzmann M, Mercier J, Bisbal C.

Cell Death & Disease 2014 Mar; 5:e1136.

Application: WB-Ce, WB-Tr, Human, Mouse, C2C12-derived cells, Myoblasts

- [ABCE1, a member of ATP-binding cassette transporter gene, encodes peptides capable of inducing HLA-A2-restricted and tumor-reactive cytotoxic T lymphocytes in colon cancer patients.](#)

Shichijo S, Ishihara Y, Azuma K, Komatsu N, Higashimoto N, Ito M, Nakamura T, Ueno T, Harada M, Itoh K.

Oncology Reports 2005 May; 13(5):907.

Disease

- [Genetic Predisposition to Disease](#)
- [Prostate cancer](#)
- [Prostatic Neoplasms](#)