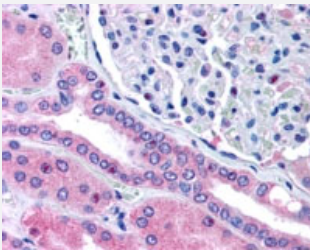


# RHPN2 polyclonal antibody

Catalog # PAB6832      Size 100 ug

## Applications



### Immunohistochemistry (Formalin/PFA-fixed paraffin-embedded sections)

RHPN2 polyclonal antibody (Cat # PAB6832) (5 ug/mL) staining of paraffin embedded human kidney. Steamed antigen retrieval with citrate buffer pH 6, AP-staining.

## Specification

<b>Product Description</b>	Goat polyclonal antibody raised against synthetic peptide of RHPN2.
<b>Immunogen</b>	A synthetic peptide corresponding to internal region of human RHPN2.
<b>Sequence</b>	C-TNKNRQKSAST
<b>Host</b>	Goat
<b>Reactivity</b>	Human
<b>Form</b>	Liquid
<b>Purification</b>	Antigen affinity purification
<b>Concentration</b>	0.5 mg/mL
<b>Recommend Usage</b>	ELISA (1:32000) Immunohistochemistry (Formalin/PFA-fixed paraffin-embedded sections) (5-10 ug/mL) The optimal working dilution should be determined by the end user.
<b>Storage Buffer</b>	In Tris saline, pH 7.3 (0.5% BSA, 0.02% sodium azide)

**Storage Instruction**

Store at -20°C.  
Aliquot to avoid repeated freezing and thawing.

**Note**

This product contains sodium azide: a POISONOUS AND HAZARDOUS SUBSTANCE which should be handled by trained staff only.

## Applications

- Immunohistochemistry (Formalin/PFA-fixed paraffin-embedded sections)

RHPN2 polyclonal antibody (Cat # PAB6832) (5 ug/mL) staining of paraffin embedded human kidney. Steamed antigen retrieval with citrate buffer pH 6, AP-staining.

- Enzyme-linked Immunoabsorbent Assay

## Gene Info — RHPN2

**Entrez GeneID**[85415](#)**Protein Accession#**[NP\\_149094.3](#)**Gene Name**

RHPN2

**Gene Alias**

RhoBP, p76RBE

**Gene Description**

rhopilin, Rho GTPase binding protein 2

**Gene Ontology**[Hyperlink](#)**Gene Summary**

This gene encodes a member of the rhophilin family of Ras-homologous (Rho)-GTPase binding proteins. The encoded protein binds both GTP- and GDP-bound RhoA and GTP-bound RhoB and may be involved in the organization of the actin cytoskeleton. [provided by RefSeq]

**Other Designations**

RhoB effector|rhopilin 2|rhopilin-2|rhopilin-like Rho-GTPase binding protein|rhopilin-like protein

## Publication Reference

- [The RhoA-binding protein, rhophilin-2, regulates actin cytoskeleton organization.](#)

Peck JW, Oberst M, Bouker KB, Bowden E, Burbelo PD.

The Journal of Biological Chemistry 2002 Nov; 277(46):43924.

## Disease

- [Colorectal Neoplasms](#)
- [Genetic Predisposition to Disease](#)