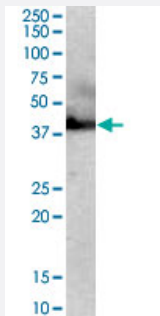


RAE1 polyclonal antibody

Catalog # PAB6827

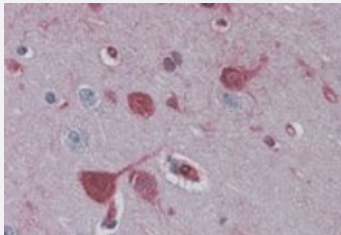
Size 100 ug

Applications



Western Blot (Cell lysate)

RAE1 polyclonal antibody (Cat # PAB6827) staining (0.03 ug/mL) of HepG2 lysate (RIPA buffer, 30 ug total protein per lane). Primary incubated for 1 hour. Detected by western blot using chemiluminescence.



Immunohistochemistry (Formalin/PFA-fixed paraffin-embedded sections)

RAE1 polyclonal antibody (Cat # PAB6827)(3.8 ug/mL) staining of paraffin embedded human brain cortex. Steamed antigen retrieval with citrate buffer pH 6, AP-staining.

Specification

Product Description	Goat polyclonal antibody raised against synthetic peptide of RAE1.
Immunogen	A synthetic peptide corresponding to C-terminus of human RAE1.
Sequence	C-NAAEELKPRNKK
Host	Goat
Theoretical MW (kDa)	41
Reactivity	Human
Specificity	NP_003601 and NP_001015885 represent identical proteins.

Form	Liquid
Purification	Antigen affinity purification
Concentration	0.5 mg/mL
Recommend Usage	ELISA (1:64000) Western Blot (0.03-0.1 ug/mL) Immunohistochemistry (Formalin/PFA-fixed paraffin-embedded sections) (3-6 ug/mL) The optimal working dilution should be determined by the end user.
Storage Buffer	In Tris saline, pH 7.3 (0.5% BSA, 0.02% sodium azide)
Storage Instruction	Store at -20°C. Aliquot to avoid repeated freezing and thawing.
Note	This product contains sodium azide: a POISONOUS AND HAZARDOUS SUBSTANCE which should be handled by trained staff only.

Applications

- Western Blot (Cell lysate)

RAE1 polyclonal antibody (Cat # PAB6827) staining (0.03 ug/mL) of HepG2 lysate (RIPA buffer, 30 ug total protein per lane). Primary incubated for 1 hour. Detected by western blot using chemiluminescence.

- Immunohistochemistry (Formalin/PFA-fixed paraffin-embedded sections)

RAE1 polyclonal antibody (Cat # PAB6827)(3.8 ug/mL) staining of paraffin embedded human brain cortex. Steamed antigen retrieval with citrate buffer pH 6, AP-staining.

- Enzyme-linked Immunoabsorbent Assay

Gene Info — RAE1

Entrez GeneID	8480
Protein Accession#	NP_003601.1;NP_001015885.1
Gene Name	RAE1
Gene Alias	FLJ30608, MGC117333, MGC126076, MGC126077, MIG14, MRNP41, Mnrp41, dJ481F12.3, dJ800J21.1
Gene Description	RAE1 RNA export 1 homolog (S. pombe)
Omim ID	603343

Gene Ontology

[Hyperlink](#)

Gene Summary

Mutations in the *Schizosaccharomyces pombe* Rae1 and *Saccharomyces cerevisiae* Gle2 genes have been shown to result in accumulation of poly(A)-containing mRNA in the nucleus, suggesting that the encoded proteins are involved in RNA export. The protein encoded by this gene is a homolog of yeast Rae1. It contains four WD40 motifs, and has been shown to localize to distinct foci in the nucleoplasm, to the nuclear rim, and to meshwork-like structures throughout the cytoplasm. This gene is thought to be involved in nucleocytoplasmic transport, and in directly or indirectly attaching cytoplasmic mRNPs to the cytoskeleton. Alternatively spliced transcript variants encoding the same protein have been found for this gene. [provided by RefSeq]

Other Designations

OTTHUMP00000166110|RAE1 (RNA export 1, *S.pombe*) homolog|homolog of yeast Rae1 (Bharathi) mRNA-associated protein of 41 kDa (Kraemer)|mRNA export protein|mRNA-associated protein MRNP 41|mRNA-binding protein, 41-kD|migration-inducing gene 14

Publication Reference

- [A Rae1-containing ribonucleoprotein complex is required for mitotic spindle assembly.](#)

Blower MD, Nachury M, Heald R, Weis K.

Cell 2005 Apr; 121(2):223.

Application: IF, IP-WB, WB, WB-Tr, Human, HeLa cells