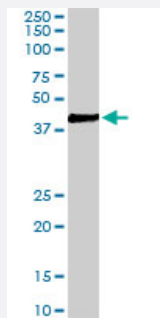


VPS37C polyclonal antibody

Catalog # PAB6825

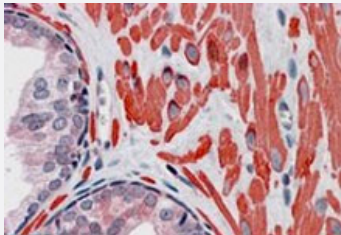
Size 100 ug

Applications



Western Blot (Tissue lysate)

VPS37C polyclonal antibody (Cat # PAB6825) (0.03g/mL) staining of human duodenum lysate (35 ug protein in RIPA buffer). Primary incubation was 1 hour. Detected by chemiluminescence.



Immunohistochemistry (Formalin/PFA-fixed paraffin-embedded sections)

VPS37C polyclonal antibody (Cat # PAB6825)(3.8 ug/mL) staining of paraffin embedded human prostate. Steamed antigen retrieval with citrate buffer pH 6, AP-staining.

Specification

Product Description	Goat polyclonal antibody raised against synthetic peptide of VPS37C.
Immunogen	A synthetic peptide corresponding to internal region of human VPS37C.
Sequence	C-ETLKDKTLQEELQ
Host	Goat
Theoretical MW (kDa)	38.7
Reactivity	Human
Form	Liquid

Purification	Antigen affinity purification
Concentration	0.5 mg/mL
Recommend Usage	ELISA (1:32000) Western Blot (0.03-0.1 ug/mL) Immunohistochemistry (Formalin/PFA-fixed paraffin-embedded sections) (3-6 ug/mL) The optimal working dilution should be determined by the end user.
Storage Buffer	In Tris saline, pH 7.3 (0.5% BSA, 0.02% sodium azide)
Storage Instruction	Store at -20°C. Aliquot to avoid repeated freezing and thawing.
Note	This product contains sodium azide: a POISONOUS AND HAZARDOUS SUBSTANCE which should be handled by trained staff only.

Applications

- Western Blot (Tissue lysate)

VPS37C polyclonal antibody (Cat # PAB6825) (0.03g/mL) staining of human duodenum lysate (35 ug protein in RIPA buffer). Primary incubation was 1 hour. Detected by chemiluminescence.

- Immunohistochemistry (Formalin/PFA-fixed paraffin-embedded sections)

VPS37C polyclonal antibody (Cat # PAB6825)(3.8 ug/mL) staining of paraffin embedded human prostate. Steamed antigen retrieval with citrate buffer pH 6, AP-staining.

- Enzyme-linked Immunoabsorbent Assay

Gene Info — VPS37C

Entrez GeneID	55048
Protein Accession#	NP_060436.4
Gene Name	VPS37C
Gene Alias	FLJ20847
Gene Description	vacuolar protein sorting 37 homolog C (S. cerevisiae)
Omim ID	610038
Gene Ontology	Hyperlink

Gene Summary

VPS37C is a subunit of ESCRT-I (endosomal sorting complex required for transport I), a complex in the class E vacuolar protein sorting (VPS) pathway required for sorting ubiquitinated transmembrane proteins into internal vesicles of multivesicular bodies (Eastman et al., 2005 [PubMed 15509564]).[supplied by OMIM]

Other Designations

vacuolar protein sorting 37C

Publication Reference

- [Identification of human VPS37C, a component of endosomal sorting complex required for transport-I important for viral budding.](#)

Eastman SW, Martin-Serrano J, Chung W, Zang T, Bieniasz PD.

The Journal of Biological Chemistry 2005 Jan; 280(1):628.

Pathway

- [Endocytosis](#)

Disease

- [Genetic Predisposition to Disease](#)
- [Hematologic Diseases](#)
- [Occupational Diseases](#)
- [Tobacco Use Disorder](#)