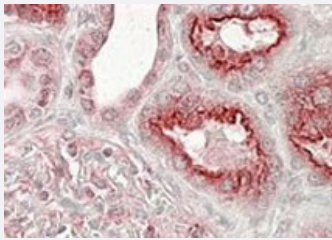


# VPS11 polyclonal antibody

Catalog # PAB6820      Size 100 ug

## Applications



### Immunohistochemistry (Formalin/PFA-fixed paraffin-embedded sections)

VPS11 polyclonal antibody (Cat # PAB6820) (3.8 ug/mL) staining of paraffin embedded human kidney. Steamed antigen retrieval with citrate buffer pH 6, AP-staining.

## Specification

<b>Product Description</b>	Goat polyclonal antibody raised against synthetic peptide of VPS11.
<b>Immunogen</b>	A synthetic peptide corresponding to internal region of human VPS11.
<b>Sequence</b>	C-HALQEKDTQTKLE
<b>Host</b>	Goat
<b>Theoretical MW (kDa)</b>	108
<b>Reactivity</b>	Human
<b>Form</b>	Liquid
<b>Purification</b>	Antigen affinity purification
<b>Concentration</b>	0.5 mg/mL
<b>Recommend Usage</b>	ELISA (1:32000) Immunohistochemistry (Formalin/PFA-fixed paraffin-embedded sections) (3-6 ug/mL) The optimal working dilution should be determined by the end user.
<b>Storage Buffer</b>	In Tris saline, pH 7.3 (0.5% BSA, 0.02% sodium azide)

**Storage Instruction**

Store at -20°C.  
Aliquot to avoid repeated freezing and thawing.

**Note**

This product contains sodium azide: a POISONOUS AND HAZARDOUS SUBSTANCE which should be handled by trained staff only.

## Applications

- Immunohistochemistry (Formalin/PFA-fixed paraffin-embedded sections)

VPS11 polyclonal antibody (Cat # PAB6820) (3.8 ug/mL) staining of paraffin embedded human kidney. Steamed antigen retrieval with citrate buffer pH 6, AP-staining.

- Enzyme-linked Immunoabsorbent Assay

## Gene Info — VPS11

**Entrez GeneID**[55823](#)**Protein Accession#**[NP\\_068375.3](#)**Gene Name**

VPS11

**Gene Alias**

END1, PEP5, RNF108, hVPS11

**Gene Description**

vacuolar protein sorting 11 homolog (S. cerevisiae)

**Omim ID**[608549](#)**Gene Ontology**[Hyperlink](#)**Gene Summary**

Vesicle mediated protein sorting plays an important role in segregation of intracellular molecules into distinct organelles. Genetic studies in yeast have identified more than 40 vacuolar protein sorting (VPS) genes involved in vesicle transport to vacuoles. This gene encodes the human homolog of yeast class C Vps11 protein. The mammalian class C Vps proteins are predominantly associated with late endosomes/lysosomes, and like their yeast counterparts, may mediate vesicle trafficking steps in the endosome/lysosome pathway. [provided by RefSeq]

**Other Designations**

vacuolar protein sorting 11|vacuolar protein sorting protein 11

## Publication Reference

- [Molecular characterization of mammalian homologues of class C Vps proteins that interact with syntaxin-7.](#)

Kim BY, Kramer H, Yamamoto A, Kominami E, Kohsaka S, Akazawa C.

The Journal of Biological Chemistry 2001 Aug; 276(31):29393.

Application: IP, IF, WB, Human, Monkey, COS-7, HEK 293 cells

## Disease

- [Cardiovascular Diseases](#)
- [Diabetes Mellitus](#)
- [Edema](#)