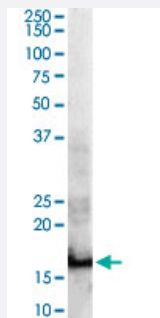


# SH2D1A polyclonal antibody

Catalog # PAB6819

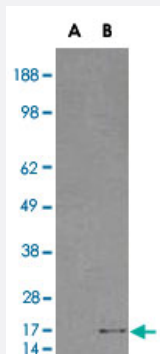
Size 100 ug

## Applications



### Western Blot (Tissue lysate)

SH2D1A polyclonal antibody (Cat # PAB6819) staining (0.3 ug/mL) of human thymus lysate (RIPA buffer, 30 ug total protein per lane). Primary incubated for 1 hour. Detected by western blot using chemiluminescence.



### Western Blot (Transfected lysate)

HEK293 overexpressing SH2D1A and probed with SH2D1A polyclonal antibody (Cat # PAB6819) (mock transfection in first lane), tested by Origene.

## Specification

Product Description	Goat polyclonal antibody raised against synthetic peptide of SH2D1A.
Immunogen	A synthetic peptide corresponding to human SH2D1A.
Sequence	C-HKRYFRKIKN
Host	Goat
Theoretical MW (kDa)	14.2, 13.9
Reactivity	Human

Form	Liquid
Purification	Antigen affinity purification
Concentration	0.5 mg/mL
Quality Control Testing	Antibody Reactive Against Synthetic Peptide.
Recommend Usage	ELISA (1:16000) Western Blot (0.3-1 ug/mL) The optimal working dilution should be determined by the end user.
Storage Buffer	In Tris saline, pH 7.3 (0.5% BSA, 0.02% sodium azide)
Storage Instruction	Store at -20°C. Aliquot to avoid repeated freezing and thawing.
Note	This product contains sodium azide: a POISONOUS AND HAZARDOUS SUBSTANCE which should be handled by trained staff only.

## Applications

- Western Blot (Tissue lysate)

SH2D1A polyclonal antibody (Cat # PAB6819) staining (0.3 ug/mL) of human thymus lysate (RIPA buffer, 30 ug total protein per lane). Primary incubated for 1 hour. Detected by western blot using chemiluminescence.

- Western Blot (Transfected lysate)

HEK293 overexpressing SH2D1A and probed with SH2D1A polyclonal antibody (Cat # PAB6819) (mock transfection in first lane), tested by Origene.

- Enzyme-linked Immunoabsorbent Assay

## Gene Info — SH2D1A

Entrez GeneID	<a href="#">4068</a>
Protein Accession#	<a href="#">NP_002342.1</a>
Gene Name	SH2D1A
Gene Alias	DSHP, EBVS, FLJ18687, FLJ92177, IMD5, LYP, MTCP1, SAP, XLP, XLPD
Gene Description	SH2 domain protein 1A
Omim ID	<a href="#">300490</a> <a href="#">308240</a>

## Gene Ontology

[Hyperlink](#)

## Gene Summary

This gene encodes a protein that plays a major role in the bidirectional stimulation of T and B cells . This protein contains an SH2 domain and a short tail. It associates with the signaling lymphocyte -activation molecule, thereby acting as an inhibitor of this transmembrane protein by blocking the recruitment of the SH2-domain-containing signal-transduction molecule SHP-2 to its docking site. This protein can also bind to other related surface molecules that are expressed on activated T, B and NK cells, thereby modifying signal transduction pathways in these cells. Mutations in this gene cause lymphoproliferative syndrome X-linked type 1 or Duncan disease, a rare immunodeficiency characterized by extreme susceptibility to infection with Epstein-Barr virus, with symptoms including severe mononucleosis and malignant lymphoma. Multiple transcript variants encoding different isoforms have been found for this gene. [provided by RefSeq]

## Other Designations

Duncan's disease|OTTHUMP00000023976|SLAM-associated protein|T cell signal transduction molecule SAP|signaling lymphocyte activation molecule-associated protein

## Publication Reference

- [The adaptor protein SH2D1A regulates signaling through CD150 \(SLAM\) in B cells.](#)

Mikhalap SV, Shlapatska LM, Yurchenko OV, Yurchenko MY, Berdova GG, Nichols KE, Clark EA, Sidorenko SP. Blood 2004 Dec; 104(13):4063.

Application: IHC-P, WB, Human, Primary lymphoma cells, Tonsils

## Pathway

- [Natural killer cell mediated cytotoxicity](#)

## Disease

- [Common Variable Immunodeficiency](#)
- [Epstein-Barr Virus Infections](#)
- [Genetic Predisposition to Disease](#)
- [Immunologic Deficiency Syndromes](#)
- [Infectious Mononucleosis](#)
- [Lymphoma](#)
- [Lymphoproliferative Disorders](#)

- [Severe Combined Immunodeficiency](#)