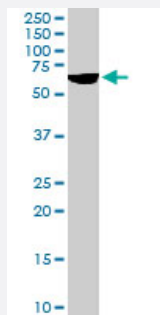


# SYK polyclonal antibody

Catalog # PAB6816      Size 100 ug

## Applications



### Western Blot (Tissue lysate)

SYK polyclonal antibody (Cat # PAB6816) (1 ug/mL) staining of human spleen lysate (35 ug protein in RIPA buffer). Primary incubation was 1 hour. Detected by chemiluminescence.

## Specification

**Product Description** Goat polyclonal antibody raised against synthetic peptide of SYK.

**Immunogen** A synthetic peptide corresponding to human SYK.

**Sequence** C-KYLQQNRHVKDKN

**Host** Goat

**Theoretical MW (kDa)** 72.1, 69.5

**Reactivity** Human

**Form** Liquid

**Purification** Antigen affinity purification

**Concentration** 0.5 mg/mL

**Quality Control Testing** Antibody Reactive Against Synthetic Peptide.

**Recommend Usage**  
 ELISA (1:16000)  
 Western Blot (1-3 ug/mL)  
 The optimal working dilution should be determined by the end user.

Storage Buffer	In Tris saline, pH 7.3 (0.5% BSA, 0.02% sodium azide)
Storage Instruction	Store at -20°C. Aliquot to avoid repeated freezing and thawing.
Note	This product contains sodium azide: a POISONOUS AND HAZARDOUS SUBSTANCE which should be handled by trained staff only.

## Applications

- Western Blot (Tissue lysate)

SYK polyclonal antibody (Cat # PAB6816) (1 ug/mL) staining of human spleen lysate (35 ug protein in RIPA buffer). Primary incubation was 1 hour. Detected by chemiluminescence.

- Enzyme-linked Immunoabsorbent Assay

## Gene Info — SYK

Entrez GeneID	<a href="#">6850</a>
Protein Accession#	<a href="#">NP_003168.2</a>
Gene Name	SYK
Gene Alias	DKFZp313N1010, FLJ25043, FLJ37489
Gene Description	spleen tyrosine kinase
Omim ID	<a href="#">600085</a>
Gene Ontology	<a href="#">Hyperlink</a>
Other Designations	OTTHUMP00000021627 OTTHUMP00000021628

## Publication Reference

- [Syk-dependent cytokine induction by Dectin-1 reveals a novel pattern recognition pathway for C type lectins.](#)

Rogers NC, Slack EC, Edwards AD, Nolte MA, Schulz O, Schweighoffer E, Williams DL, Gordon S, Tybulewicz VL, Brown GD, Reis e Sousa C.

Immunity 2005 Apr; 22(4):507.

Application: WB, Human, LK cells, Recombinant protein

## Pathway

- [B cell receptor signaling pathway](#)
- [Fc epsilon RI signaling pathway](#)
- [Fc gamma R-mediated phagocytosis](#)
- [Natural killer cell mediated cytotoxicity](#)

## Disease

- [Lymphedema](#)
- [Lymphoproliferative Disorders](#)
- [Myelodysplastic Syndromes](#)
- [Tobacco Use Disorder](#)