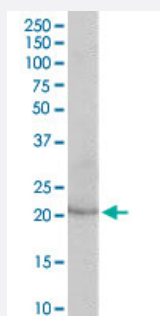


LCN2 polyclonal antibody

Catalog # PAB6795

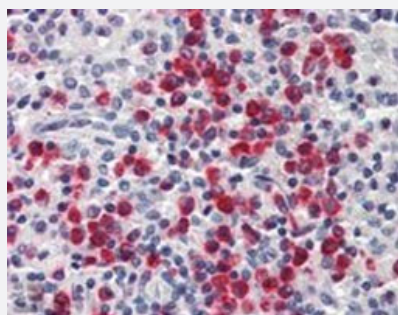
Size 100 ug

Applications



Western Blot (Tissue lysate)

LCN2 polyclonal antibody (Cat # PAB6795) (0.03 ug/mL) staining of human kidney lysate (35 ug protein in RIPA buffer). Primary incubation was 1 hour. Detected by chemiluminescence.



Immunohistochemistry (Formalin/PFA-fixed paraffin-embedded sections)

LCN2 polyclonal antibody (Cat # PAB6795, 2.5 ug/mL) staining of paraffin embedded human spleen. Steamed antigen retrieval with citrate buffer pH 6, AP-staining.

Specification

Product Description	Goat polyclonal antibody raised against synthetic peptide of LCN2.
Immunogen	A synthetic peptide corresponding to human LCN2.
Sequence	C-AILREDKDPQKMY
Host	Goat
Theoretical MW (kDa)	22.6
Reactivity	Human
Form	Liquid

Purification	Antigen affinity purification
Concentration	0.5 mg/mL
Quality Control Testing	Antibody Reactive Against Synthetic Peptide.
Recommend Usage	ELISA (1:16000) Western blot (0.01-0.03 ug/mL) Immunohistochemistry (Formalin/PFA-fixed paraffin-embedded sections) (2-3 ug/mL) The optimal working dilution should be determined by the end user.
Storage Buffer	In Tris saline, pH 7.3 (0.5% BSA, 0.02% sodium azide)
Storage Instruction	Store at -20°C. Aliquot to avoid repeated freezing and thawing.
Note	This product contains sodium azide: a POISONOUS AND HAZARDOUS SUBSTANCE which should be handled by trained staff only.

Applications

- Western Blot (Tissue lysate)

LCN2 polyclonal antibody (Cat # PAB6795) (0.03 ug/mL) staining of human kidney lysate (35 ug protein in RIPA buffer). Primary incubation was 1 hour. Detected by chemiluminescence.

- Immunohistochemistry (Formalin/PFA-fixed paraffin-embedded sections)

LCN2 polyclonal antibody (Cat # PAB6795, 2.5 ug/mL) staining of paraffin embedded human spleen. Steamed antigen retrieval with citrate buffer pH 6, AP-staining.

- Enzyme-linked Immunoabsorbent Assay

Gene Info — LCN2

Entrez GeneID	3934
Protein Accession#	NP_005555.2
Gene Name	LCN2
Gene Alias	NGAL
Gene Description	lipocalin 2
Omim ID	600181

Gene Ontology

[Hyperlink](#)

Other Designations

OTTHUMP00000022238|OTTHUMP00000022240|neutrophil gelatinase-associated lipocalin|oncogene 24p3|siderocalin

Publication Reference

- [Neutrophil gelatinase-associated lipocalin \(NGAL\) as a biomarker for acute renal injury after cardiac surgery.](#)

Mishra J, Dent C, Tarabishi R, Mitsnefes MM, Ma Q, Kelly C, Ruff SM, Zahedi K, Shao M, Bean J, Mori K, Barasch J, Devarajan P.

Lancet 2005 Apr; 365(9466):1231.

Application: ELISA, WB, Human, Urine

Disease

- [Abortion](#)
- [Genetic Predisposition to Disease](#)
- [Ovarian Neoplasms](#)