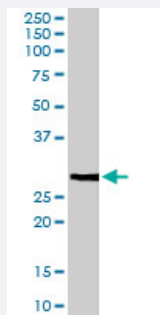


FFAR1 polyclonal antibody

Catalog # PAB6794

Size 100 ug

Applications



Western Blot (Tissue lysate)

FFAR1 polyclonal antibody (Cat # PAB6794) (0.01 ug/mL) staining of human breast lysate (35 ug protein in RIPA buffer). Primary incubation was 1 hour. Detected by chemiluminescence.

Specification

Product Description Goat polyclonal antibody raised against synthetic peptide of FFAR1.

Immunogen A synthetic peptide corresponding to human FFAR1.

Sequence CAARTQGGKSQK

Host Goat

Theoretical MW (kDa) 31.5

Reactivity Human

Form Liquid

Purification Antigen affinity purification

Concentration 0.5 mg/mL

Quality Control Testing Antibody Reactive Against Synthetic Peptide.

Recommend Usage
 ELISA (1:16000)
 Western Blot (0.01-0.03 ug/mL)
 The optimal working dilution should be determined by the end user.

Storage Buffer	In Tris saline, pH 7.3 (0.5% BSA, 0.02% sodium azide)
Storage Instruction	Store at -20°C. Aliquot to avoid repeated freezing and thawing.
Note	This product contains sodium azide: a POISONOUS AND HAZARDOUS SUBSTANCE which should be handled by trained staff only.

Applications

- Western Blot (Tissue lysate)

FFAR1 polyclonal antibody (Cat # PAB6794) (0.01 ug/mL) staining of human breast lysate (35 ug protein in RIPA buffer). Primary incubation was 1 hour. Detected by chemiluminescence.

- Enzyme-linked Immunoabsorbent Assay

Gene Info — FFAR1

Entrez GeneID	2864
Protein Accession#	NP_005294.1
Gene Name	FFAR1
Gene Alias	FFA1R, GPCR40, GPR40
Gene Description	free fatty acid receptor 1
Omim ID	603820
Gene Ontology	Hyperlink
Gene Summary	This gene encodes a member of the GP40 family of G protein-coupled receptors that are clustered together on chromosome 19. The encoded protein is a receptor for medium and long chain free fatty acids and may be involved in the metabolic regulation of insulin secretion. Polymorphisms in this gene may be associated with type 2 diabetes. [provided by RefSeq]
Other Designations	G protein-coupled receptor 40

Publication Reference

- [Expression of long-chain fatty acid receptor GPR40 is associated with cancer progression in colorectal cancer: A retrospective study.](#)

Nakashima C, Shingo K, Fujiwara-Tani R, Luo Y, Kawahara I, Goto K, Sasaki T, Fujii K, Ohmori H, Kuniyasu H.

Oncology Letters 2018 Jun; 15(6):8641.

Application: IHC, Human, Human colorectal cancer

- [Tumor necrosis factor \$\alpha\$ decreases glucagon-like peptide-2 expression by up-regulating G-protein-coupled receptor 120 in Crohn disease.](#)

Tsukahara T, Watanabe K, Watanabe T, Yamagami H, Sogawa M, Tanigawa T, Shiba M, Tominaga K, Fujiwara Y, Maeda K, Hirakawa K, Arakawa T.

The American Journal of Pathology 2015 Jan; 185(1):185.

Application: IHC, WB, Human, Ileal mucosa

- [Oleate promotes the proliferation of breast cancer cells via the G protein-coupled receptor GPR40.](#)

Hardy S, St-Onge GG, Joly E, Langelier Y, Prentki M.

The Journal of Biological Chemistry 2005 Apr; 280(14):13285.

Disease

- [Cardiovascular Diseases](#)
- [Diabetes Mellitus](#)
- [Edema](#)
- [Insulin Resistance](#)
- [Obesity](#)