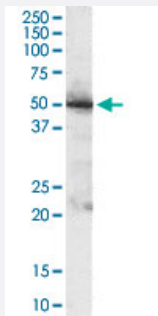


# PDHX polyclonal antibody

Catalog # PAB6779

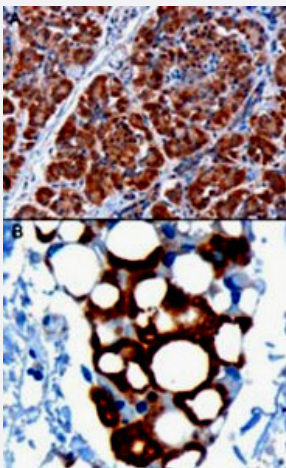
Size 100 ug

## Applications



### Western Blot (Tissue lysate)

PDHX polyclonal antibody (Cat # PAB6779) (1 ug/mL) staining of human pancreas lysate (35 ug protein in RIPA buffer). Primary incubation was 1 hour. Detected by chemiluminescence.



### Immunohistochemistry (Formalin/PFA-fixed paraffin-embedded sections)

PDHX polyclonal antibody (Cat # PAB6779) staining of paraffin embedded human pancreas. A) Microwaved antigen retrieval with citrate buffer pH 6 (3 ug/mL), HRP-staining. B) Microwaved antigen retrieval with Tris/EDTA buffer pH9 (1 ug/mL), HRP-staining.

## Specification

Product Description	Goat polyclonal antibody raised against synthetic peptide of PDHX.
Immunogen	A synthetic peptide corresponding to human PDHX.
Sequence	C-KSFKANLENPIRLA
Host	Goat
Theoretical MW (kDa)	54.2, 51.5, 29.9

Reactivity	Human
Form	Liquid
Purification	Antigen affinity purification
Concentration	0.5 mg/mL
Quality Control Testing	Antibody Reactive Against Synthetic Peptide.
Recommend Usage	ELISA (1:32000) Western Blot (0.1-1 ug/mL) Immunohistochemistry (1-3 ug/mL) The optimal working dilution should be determined by the end user.
Storage Buffer	In Tris saline, pH 7.3 (0.5% BSA, 0.02% sodium azide)
Storage Instruction	Store at -20°C. Aliquot to avoid repeated freezing and thawing.
Note	This product contains sodium azide: a POISONOUS AND HAZARDOUS SUBSTANCE which should be handled by trained staff only.

## Applications

- Western Blot (Tissue lysate)

PDHX polyclonal antibody (Cat # PAB6779) (1 ug/mL) staining of human pancreas lysate (35 ug protein in RIPA buffer). Primary incubation was 1 hour. Detected by chemiluminescence.

- Immunohistochemistry (Formalin/PFA-fixed paraffin-embedded sections)

PDHX polyclonal antibody (Cat # PAB6779) staining of paraffin embedded human pancreas. A) Microwaved antigen retrieval with citrate buffer pH 6 (3 ug/mL), HRP-staining. B) Microwaved antigen retrieval with Tris/EDTA buffer pH9 (1 ug/mL), HRP-staining.

- Enzyme-linked Immunoabsorbent Assay

## Gene Info — PDHX

Entrez GeneID	<a href="#">8050</a>
Protein Accession#	<a href="#">NP_003468.1</a>
Gene Name	PDHX
Gene Alias	DLDBP, E3BP, OPDX, PDX1, proX

Gene Description	pyruvate dehydrogenase complex, component X
Omim ID	<a href="#">245349 608769</a>
Gene Ontology	<a href="#">Hyperlink</a>
Gene Summary	The PDHX gene encodes component X of the pyruvate dehydrogenase (PDH) complex. For a detailed description of the pyruvate dehydrogenase complex, see MIM 300502. The mammalian PDH complex differs from that in E. coli and from the other mammalian alpha-keto acid dehydrogenases by the presence of a 53-kD protein called protein X. Component X binds to the E3 (MIM 238331) component of the PDH complex (Robinson et al., 1990 [PubMed 2112155]; Aral et al., 1997 [PubMed 9399911]).[supplied by OMIM]
Other Designations	E3-binding protein pyruvate dehydrogenase complex, lipoyl-containing component X

## Publication Reference

- [Distinct regulatory properties of pyruvate dehydrogenase kinase and phosphatase isoforms.](#)

Roche TE, Baker JC, Yan X, Hiromasa Y, Gong X, Peng T, Dong J, Turkan A, Kasten SA.

Progress in Nucleic acid Research and Molecular Biology 2001 Jan; 70:33.

Application: WB-Ce, WB-Tr, Human, Mammalian cells