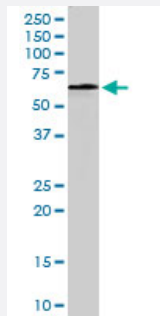


PPP2R1A polyclonal antibody

Catalog # PAB6772

Size 100 ug

Applications



Western Blot (Tissue lysate)

PPP2R1A polyclonal antibody (Cat # PAB6772) (0.03 ug/mL) staining of human lymph node lysate (35 ug protein in RIPA buffer). Primary incubation was 1 hour. Detected by chemiluminescence.

Specification

Product Description Goat polyclonal antibody raised against synthetic peptide of PPP2R1A.

Immunogen A synthetic peptide corresponding to human PPP2R1A.

Sequence C-KYFAQEALTVLSLA

Host Goat

Theoretical MW (kDa) 65.3

Reactivity Human, Mouse, Rat

Form Liquid

Purification Antigen affinity purification

Concentration 0.5 mg/mL

Quality Control Testing Antibody Reactive Against Synthetic Peptide.

Recommend Usage
 ELISA (1:8000)
 Western Blot (0.03-0.1 ug/mL)
 The optimal working dilution should be determined by the end user.

Storage Buffer	In Tris saline, pH 7.3 (0.5% BSA, 0.02% sodium azide)
Storage Instruction	Store at -20°C. Aliquot to avoid repeated freezing and thawing.
Note	This product contains sodium azide: a POISONOUS AND HAZARDOUS SUBSTANCE which should be handled by trained staff only.

Applications

- Western Blot (Tissue lysate)

PPP2R1A polyclonal antibody (Cat # PAB6772) (0.03 ug/mL) staining of human lymph node lysate (35 ug protein in RIPA buffer). Primary incubation was 1 hour. Detected by chemiluminescence.

- Enzyme-linked Immunoabsorbent Assay

Gene Info — PPP2R1A

Entrez GeneID	5518
Protein Accession#	NP_055040.2
Gene Name	PPP2R1A
Gene Alias	MGC786, PR65A
Gene Description	protein phosphatase 2 (formerly 2A), regulatory subunit A, alpha isoform
Omim ID	605983
Gene Ontology	Hyperlink

Gene Summary	This gene encodes a constant regulatory subunit of protein phosphatase 2. Protein phosphatase 2 is one of the four major Ser/Thr phosphatases, and it is implicated in the negative control of cell growth and division. It consists of a common heteromeric core enzyme, which is composed of a catalytic subunit and a constant regulatory subunit, that associates with a variety of regulatory subunits. The constant regulatory subunit A serves as a scaffolding molecule to coordinate the assembly of the catalytic subunit and a variable regulatory B subunit. This gene encodes an alpha isoform of the constant regulatory subunit A. [provided by RefSeq]
Other Designations	PP2A, subunit A, PR65-alpha isoform PP2A, subunit A, R1-alpha isoform alpha isoform of regulatory subunit A, protein phosphatase 2 medium tumor antigen-associated 61 KDA protein protein phosphatase 2 (formerly 2A), regulatory subunit A (PR 65), alpha isoform

Publication Reference

- [Regulation of protein phosphatase 2A activity by heat shock transcription factor 2.](#)

Hong Y, Sarge KD.

The Journal of Biological Chemistry 1999 May; 274(19):12967.

Application: WB-Ce, WB-Re, Human, HeLa, K-562 cells, Recombinant protein

Pathway

- [Long-term depression](#)
- [TGF-beta signaling pathway](#)
- [Tight junction](#)
- [Wnt signaling pathway](#)

Disease

- [Breast Diseases](#)
- [Breast Neoplasms](#)
- [Precancerous Conditions](#)