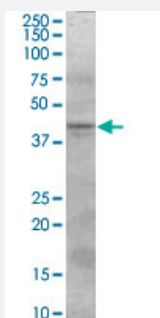


SERPINI2 polyclonal antibody

Catalog # PAB6764

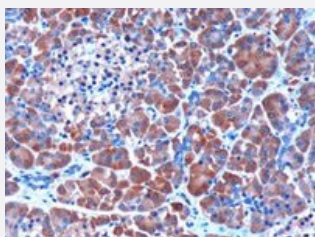
Size 100 ug

Applications



Western Blot (Tissue lysate)

SERPINI2 polyclonal antibody (Cat # PAB6764) (0.3 ug/mL) staining of human pancreas lysate (35 ug protein in RIPA buffer). Primary incubation was 1 hour. Detected by chemiluminescence.



Immunohistochemistry (Formalin/PFA-fixed paraffin-embedded sections)

SERPINI2 polyclonal antibody (Cat # PAB6764) (3 ug/mL) staining of paraffin embedded human pancreas. Microwaved antigen retrieval with citrate buffer pH 6, HRP-staining

Specification

Product Description	Goat polyclonal antibody raised against synthetic peptide of SERPINI2.
Immunogen	A synthetic peptide corresponding to internal region of human SERPINI2.
Sequence	C-KGDWKQKFRKEDTQ
Host	Goat
Theoretical MW (kDa)	46.1, 47.4
Reactivity	Human
Specificity	This antibody is expected to recognize both reported isoforms (NP_006208.1, NP_00101230.3.1).

Form	Liquid
Purification	Antigen affinity purification
Concentration	0.5 mg/mL
Recommend Usage	ELISA (1:64000) Western Blot (0.3-1 ug/mL) Immunohistochemistry (Formalin/PFA-fixed paraffin-embedded sections) (3 ug/mL) The optimal working dilution should be determined by the end user.
Storage Buffer	In Tris saline, pH 7.3 (0.5% BSA, 0.02% sodium azide)
Storage Instruction	Store at -20°C. Aliquot to avoid repeated freezing and thawing.
Note	This product contains sodium azide: a POISONOUS AND HAZARDOUS SUBSTANCE which should be handled by trained staff only.

Applications

- Western Blot (Tissue lysate)

SERPIN2 polyclonal antibody (Cat # PAB6764) (0.3 ug/mL) staining of human pancreas lysate (35 ug protein in RIPA buffer). Primary incubation was 1 hour. Detected by chemiluminescence.

- Immunohistochemistry (Formalin/PFA-fixed paraffin-embedded sections)

SERPIN2 polyclonal antibody (Cat # PAB6764) (3 ug/mL) staining of paraffin embedded human pancreas. Microwaved antigen retrieval with citrate buffer pH 6, HRP-staining

- Enzyme-linked Immunoabsorbent Assay

Gene Info — SERPIN2

Entrez GeneID	5276
Protein Accession#	NP_006208.1;NP_00101230.3.1
Gene Name	SERPIN2
Gene Alias	MEPI, PANCPIN, PI14, TSA2004
Gene Description	serpin peptidase inhibitor, clade I (pancpin), member 2
Omim ID	605587

Gene Ontology

[Hyperlink](#)

Gene Summary

The protein encoded by this gene is a member of the serine protease inhibitor (serpin) superfamily made up of proteins which play central roles in the regulation of a wide variety of physiological processes, including coagulation, fibrinolysis, development, malignancy and inflammation. The gene product may have a role in a growth-control, possibly growth-suppressing pathway and, when impaired, may be involved in pancreatic carcinogenesis. The protein is a member of the plasminogen activator inhibitor-1 family, a subset of the serpin superfamily whose members act as tissue-specific tPA inhibitors. Two alternatively spliced transcript variants encoding distinct protein isoforms have been found for this gene. [provided by RefSeq]

Other Designations

myoepithelium-derived serine protease inhibitor|protease inhibitor 14|serine (or cysteine) proteinase inhibitor, clade I (neuroserpin), member 2|serine (or cysteine) proteinase inhibitor, clade I (pancpin), member 2

Publication Reference

- [Isolation and characterization of a novel human pancreas-specific gene, pancpin, that is down-regulated in pancreatic cancer cells.](#)

Ozaki K, Nagata M, Suzuki M, Fujiwara T, Miyoshi Y, Ishikawa O, Ohigashi H, Imaoka S, Takahashi E, Nakamura Y.
Genes, Chromosomes & Cancer 1998 Jul; 22(3):179.

Disease

- [Adenocarcinoma](#)
- [Esophageal Neoplasms](#)