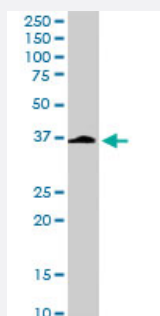


NANOS1 polyclonal antibody

Catalog # PAB6760

Size 100 ug

Applications



Western Blot (Tissue lysate)

NANOS1 polyclonal antibody (Cat # PAB6760) (0.3 ug/mL) staining of human testis lysate (35 ug protein in RIPA buffer). Primary incubation was 1 hour. Detected by chemiluminescence.

Specification

Product Description	Goat polyclonal antibody raised against synthetic peptide of NANOS1.
Immunogen	A synthetic peptide corresponding to human NANOS1.
Sequence	C-SARDGPPGKKLR
Host	Goat
Theoretical MW (kDa)	30.2
Reactivity	Human
Specificity	This antibody is expected to recognize the longer isoform 1 only (NP_955631), ie not isoform 2 (NP_001009553).
Form	Liquid
Purification	Antigen affinity purification
Concentration	0.5 mg/mL
Quality Control Testing	Antibody Reactive Against Synthetic Peptide.

Recommend Usage	ELISA (1:64000) Western Blot (1-3 ug/mL) The optimal working dilution should be determined by the end user.
Storage Buffer	In Tris saline, pH 7.3 (0.5% BSA, 0.02% sodium azide)
Storage Instruction	Store at -20°C. Aliquot to avoid repeated freezing and thawing.
Note	This product contains sodium azide: a POISONOUS AND HAZARDOUS SUBSTANCE which should be handled by trained staff only.

Applications

- Western Blot (Tissue lysate)

NANOS1 polyclonal antibody (Cat # PAB6760) (0.3 ug/mL) staining of human testis lysate (35 ug protein in RIPA buffer). Primary incubation was 1 hour. Detected by chemiluminescence.

- Enzyme-linked Immunoabsorbent Assay

Gene Info — NANOS1

Entrez GeneID	340719
Protein Accession#	NP_955631.1
Gene Name	NANOS1
Gene Alias	NOS1
Gene Description	nanos homolog 1 (Drosophila)
Omim ID	608226
Gene Ontology	Hyperlink
Other Designations	OTTHUMP00000046853 nanos homolog 1

Publication Reference

- [Conservation of a Pumilio-Nanos complex from Drosophila germ plasm to human germ cells.](#)

Jaruzelska J, Kotecki M, Kusz K, Spik A, Firpo M, Reijo Pera RA.

Development Genes and Evolution 2003 Apr; 213(3):120.

Application: IHC-P, WB-Ti, Human, Human testis sections