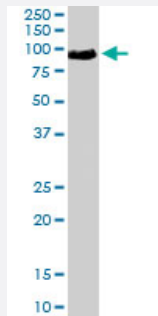


TRAK1 polyclonal antibody

Catalog # PAB6727

Size 100 ug

Applications



Western Blot (Tissue lysate)

TRAK1 polyclonal antibody (Cat # PAB6727) staining (0.3 ug/mL) of human heart lysate (RIPA buffer, 30 ug total protein per lane). Primary incubated for 1 hour. Detected by western blot using chemiluminescence.

Specification

Product Description Goat polyclonal antibody raised against synthetic peptide of TRAK1.

Immunogen A synthetic peptide corresponding to human TRAK1.

Sequence CGAKLSKQTS LR

Host Goat

Theoretical MW (kDa) 77.3

Reactivity Human

Form Liquid

Purification Antigen affinity purification

Concentration 0.5 mg/mL

Quality Control Testing Antibody Reactive Against Synthetic Peptide.

Recommend Usage
 ELISA (1:64000)
 Western Blot (0.3-1.5 ug/mL)
 The optimal working dilution should be determined by the end user.

Storage Buffer	In Tris saline, pH 7.3 (0.5% BSA, 0.02% sodium azide)
Storage Instruction	Store at -20°C. Aliquot to avoid repeated freezing and thawing.
Note	This product contains sodium azide: a POISONOUS AND HAZARDOUS SUBSTANCE which should be handled by trained staff only.

Applications

- Western Blot (Tissue lysate)

TRAK1 polyclonal antibody (Cat # PAB6727) staining (0.3 ug/mL) of human heart lysate (RIPA buffer, 30 ug total protein per lane). Primary incubated for 1 hour. Detected by western blot using chemiluminescence.

- Enzyme-linked Immunoabsorbent Assay

Gene Info — TRAK1

Entrez GeneID	22906
Protein Accession#	NP_055780
Gene Name	TRAK1
Gene Alias	OIP106
Gene Description	trafficking protein, kinesin binding 1
Omim ID	608112
Gene Ontology	Hyperlink
Gene Summary	O
Other Designations	OGT(O Glc NAc transferase) interacting protein 106 KDa OGT(O-Glc-NAc transferase)-interacting protein 106 KDa

Publication Reference

- [GRIF-1 and OIP106, members of a novel gene family of coiled-coil domain proteins: association in vivo and in vitro with kinesin.](#)

Brickley K, Smith MJ, Beck M, Stephenson FA.

The Journal of Biological Chemistry 2005 Apr; 280(15):14723.

Disease

- [Tobacco Use Disorder](#)