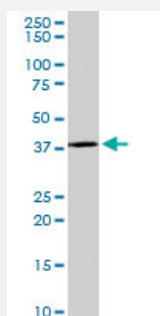


SORD polyclonal antibody

Catalog # PAB6726

Size 100 ug

Applications



Western Blot (Tissue lysate)

SORD polyclonal antibody (Cat # PAB6726) (0.1 ug/mL) staining of mouse kidney lysate (35 ug protein in RIPA buffer). Primary incubation was 1 hour. Detected by chemiluminescence.

Specification

Product Description Goat polyclonal antibody raised against synthetic peptide of SORD.

Immunogen A synthetic peptide corresponding to human SORD.

Sequence KIMLKCDPSDQNP

Host Goat

Theoretical MW (kDa) 38.3

Reactivity Mouse

Form Liquid

Purification Antigen affinity purification

Concentration 0.5 mg/mL

Quality Control Testing Antibody Reactive Against Synthetic Peptide.

Recommend Usage
 ELISA (1:64000)
 Western Blot (0.1-1 ug/mL)
 The optimal working dilution should be determined by the end user.

Storage Buffer	In Tris saline, pH 7.3 (0.5% BSA, 0.02% sodium azide)
Storage Instruction	Store at -20°C. Aliquot to avoid repeated freezing and thawing.
Note	This product contains sodium azide: a POISONOUS AND HAZARDOUS SUBSTANCE which should be handled by trained staff only.

Applications

- Western Blot (Tissue lysate)

SORD polyclonal antibody (Cat # PAB6726) (0.1 ug/mL) staining of mouse kidney lysate (35 ug protein in RIPA buffer). Primary incubation was 1 hour. Detected by chemiluminescence.

- Enzyme-linked Immunoabsorbent Assay

Gene Info — SORD

Entrez GeneID	6652
Protein Accession#	NP_003095.1
Gene Name	SORD
Gene Alias	SORD1
Gene Description	sorbitol dehydrogenase
Omim ID	182500
Gene Ontology	Hyperlink
Other Designations	-

Publication Reference

- [Steady-state kinetic properties of sorbitol dehydrogenase from chicken liver.](#)

Karacaoglan V, Ozer I.

Comparative Biochemistry and Physiology. Part B, Biochemistry & Molecular Biology 2005 Feb; 140(2):309.

Pathway

- [Fructose and mannose metabolism](#)
- [Metabolic pathways](#)

Disease

- [Genetic Predisposition to Disease](#)
- [Ovarian Neoplasms](#)