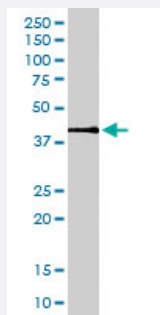


MAPK1 polyclonal antibody

Catalog # PAB6721 Size 100 ug

Applications



Western Blot (Cell lysate)

MAPK1 polyclonal antibody (Cat # PAB6721) (0.5 ug/mL) staining of HepG2 lysate (35 ug protein in RIPA buffer). Primary incubation was 1 hour. Detected by chemiluminescence.

Specification

Product Description	Goat polyclonal antibody raised against synthetic peptide of MAPK1.
Immunogen	A synthetic peptide corresponding to human MAPK1.
Sequence	CAAGPEMVRGQVF
Host	Goat
Theoretical MW (kDa)	41.4
Reactivity	Human
Specificity	This antibody is expected to recognize an epitope corresponding to aa 9-19 of both reported protein isoforms of human ERK2/MAPK1 protein.
Form	Liquid
Purification	Antigen affinity purification
Concentration	0.5 mg/mL
Quality Control Testing	Antibody Reactive Against Synthetic Peptide.

Recommend Usage	ELISA (1:8000) Western Blot (0.5-2 ug/mL) The optimal working dilution should be determined by the end user.
Storage Buffer	In Tris saline, pH 7.3 (0.5% BSA, 0.02% sodium azide)
Storage Instruction	Store at -20°C. Aliquot to avoid repeated freezing and thawing.
Note	This product contains sodium azide: a POISONOUS AND HAZARDOUS SUBSTANCE which should be handled by trained staff only.

Applications

- Western Blot (Cell lysate)

MAPK1 polyclonal antibody (Cat # PAB6721) (0.5 ug/mL) staining of HepG2 lysate (35 ug protein in RIPA buffer). Primary incubation was 1 hour. Detected by chemiluminescence.

- Enzyme-linked Immunoabsorbent Assay

Gene Info — MAPK1

Entrez GeneID	5594
Protein Accession#	NP_002736;NP_620407
Gene Name	MAPK1
Gene Alias	ERK, ERK2, ERT1, MAPK2, P42MAPK, PRKM1, PRKM2, p38, p40, p41, p41mapk
Gene Description	mitogen-activated protein kinase 1
Omim ID	176948
Gene Ontology	Hyperlink
Gene Summary	The protein encoded by this gene is a member of the MAP kinase family. MAP kinases, also known as extracellular signal-regulated kinases (ERKs), act as an integration point for multiple biochemical signals, and are involved in a wide variety of cellular processes such as proliferation, differentiation, transcription regulation and development. The activation of this kinase requires its phosphorylation by upstream kinases. Upon activation, this kinase translocates to the nucleus of the stimulated cells, where it phosphorylates nuclear targets. Two alternatively spliced transcript variants encoding the same protein, but differing in the UTRs, have been reported for this gene. [provided by RefSeq]

Other Designations

OTTHUMP00000174492|extracellular signal-regulated kinase 2|extracellular signal-regulated kinase-2|mitogen-activated protein kinase 2|protein tyrosine kinase ERK2

Publication Reference

- [EPO receptor-mediated ERK kinase and NF-kappaB activation in erythropoietin-promoted differentiation of astrocytes.](#)

Lee SM, Nguyen TH, Park MH, Kim KS, Cho KJ, Moon DC, Kim HY, Yoon DY, Hong JT.

Biochemical and Biophysical Research Communications 2004 Aug; 320(4):1087.

Application: WB, Rat, Rat astrocytes

Pathway

- [Acute myeloid leukemia](#)
- [Adherens junction](#)
- [Axon guidance](#)
- [B cell receptor signaling pathway](#)
- [Bladder cancer](#)
- [Chemokine signaling pathway](#)
- [Chronic myeloid leukemia](#)
- [Colorectal cancer](#)
- [Dorso-ventral axis formation](#)
- [Endometrial cancer](#)
- [ErbB signaling pathway](#)
- [Fc epsilon RI signaling pathway](#)
- [Fc gamma R-mediated phagocytosis](#)
- [Focal adhesion](#)
- [Gap junction](#)
- [Glioma](#)

- [GnRH signaling pathway](#)
- [Insulin signaling pathway](#)
- [Long-term depression](#)
- [Long-term potentiation](#)
- [MAPK signaling pathway](#)
- [Melanogenesis](#)
- [Melanoma](#)
- [mTOR signaling pathway](#)
- [Natural killer cell mediated cytotoxicity](#)
- [Neurotrophin signaling pathway](#)
- [Non-small cell lung cancer](#)
- [Pancreatic cancer](#)
- [Pathways in cancer](#)
- [Prion diseases](#)
- [Prostate cancer](#)
- [Regulation of actin cytoskeleton](#)
- [Renal cell carcinoma](#)
- [T cell receptor signaling pathway](#)
- [TGF-beta signaling pathway](#)
- [Thyroid cancer](#)
- [Toll-like receptor signaling pathway](#)
- [Type II diabetes mellitus](#)
- [Vascular smooth muscle contraction](#)
- [VEGF signaling pathway](#)

- [Anorexia Nervosa](#)
- [Asthma](#)
- [Bulimia](#)
- [Cardiovascular Diseases](#)
- [Diabetes Mellitus](#)
- [Disease Models](#)
- [Edema](#)
- [Genetic Predisposition to Disease](#)
- [HIV Infections](#)
- [Kidney Failure](#)
- [Narcolepsy](#)
- [Ovarian Neoplasms](#)
- [Thyroid Neoplasms](#)