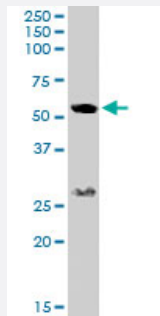


# FLVCR1 polyclonal antibody

Catalog # PAB6710

Size 100 ug

## Applications



### Western Blot (Tissue lysate)

FLVCR1 polyclonal antibody (Cat # PAB6710) (0.1 ug/mL) staining of human bone marrow lysate (35 ug protein in RIPA buffer). Primary incubation was 1 hour. Detected by chemiluminescence.

## Specification

**Product Description** Goat polyclonal antibody raised against synthetic peptide of FLVCR1.

**Immunogen** A synthetic peptide corresponding to human FLVCR1.

**Sequence** C-KTVMLSKQSESAI

**Host** Goat

**Theoretical MW (kDa)** 59.9

**Reactivity** Human

**Form** Liquid

**Purification** Antigen affinity purification

**Concentration** 0.5 mg/mL

**Quality Control Testing** Antibody Reactive Against Synthetic Peptide.

**Recommend Usage**  
ELISA (1:128000)  
Western Blot (0.1-0.3 ug/mL)  
The optimal working dilution should be determined by the end user.

Storage Buffer	In Tris saline, pH 7.3 (0.5% BSA, 0.02% sodium azide)
Storage Instruction	Store at -20°C. Aliquot to avoid repeated freezing and thawing.
Note	This product contains sodium azide: a POISONOUS AND HAZARDOUS SUBSTANCE which should be handled by trained staff only.

## Applications

- Western Blot (Tissue lysate)

FLVCR1 polyclonal antibody (Cat # PAB6710) (0.1 ug/mL) staining of human bone marrow lysate (35 ug protein in RIPA buffer). Primary incubation was 1 hour. Detected by chemiluminescence.

- Enzyme-linked Immunoabsorbent Assay

## Gene Info — FLVCR1

Entrez GeneID	<a href="#">28982</a>
Protein Accession#	<a href="#">NP_054772.1</a>
Gene Name	FLVCR1
Gene Alias	FLVCR
Gene Description	feline leukemia virus subgroup C cellular receptor 1
Omim ID	<a href="#">609144</a>
Gene Ontology	<a href="#">Hyperlink</a>
Other Designations	OTTHUMP00000035011

## Publication Reference

- [Enhanced alternative splicing of the FLVCR1 gene in Diamond Blackfan anemia disrupts FLVCR1 expression and function that are critical for erythropoiesis.](#)

Rey MA, Duffy SP, Brown JK, Kennedy JA, Dick JE, Dror Y, Tailor CS.

Haematologica 2008 Nov; 93(11):1617.

Application: WB, Human, K-562 cells