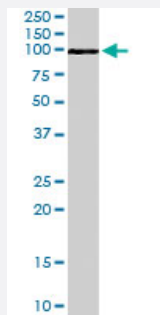


ADAM12 polyclonal antibody

Catalog # PAB6697

Size 100 ug

Applications



Western Blot (Tissue lysate)

ADAM12 polyclonal antibody (Cat # PAB6697) staining (0.1 ug/mL) of human heart lysate (RIPA buffer, 30 ug total protein per lane). Primary incubated for 1 hour. Detected by western blot using chemiluminescence.

Specification

Product Description	Goat polyclonal antibody raised against synthetic peptide of ADAM12.
Immunogen	A synthetic peptide corresponding to human ADAM12.
Sequence	AARPLPVSPARALC
Host	Goat
Theoretical MW (kDa)	99.6, 80.5
Reactivity	Human
Specificity	This antibody is expected to recognize both the longer membrane-bound form of human ADAM12 (NP_003465) and the shorter soluble ADAM12 splice isoform (NP_067673). This antibody does not cross-react with other ADAMS.
Form	Liquid
Purification	Antigen affinity purification
Concentration	0.5 mg/mL
Quality Control Testing	Antibody Reactive Against Synthetic Peptide.

Recommend Usage	ELISA (1:64000) Western blot (0.1-0.3 ug/mL) Immunohistochemistry (Formalin/PFA-fixed paraffin-embedded sections) (3-5 ug/mL) The optimal working dilution should be determined by the end user.
Storage Buffer	In Tris saline, pH 7.3 (0.5% BSA, 0.02% sodium azide)
Storage Instruction	Store at -20°C. Aliquot to avoid repeated freezing and thawing.
Note	This product contains sodium azide: a POISONOUS AND HAZARDOUS SUBSTANCE which should be handled by trained staff only.

Applications

- Western Blot (Tissue lysate)

ADAM12 polyclonal antibody (Cat # PAB6697) staining (0.1 ug/mL) of human heart lysate (RIPA buffer, 30 ug total protein per lane). Primary incubated for 1 hour. Detected by western blot using chemiluminescence.

- Immunohistochemistry

- Enzyme-linked Immunoabsorbent Assay

Gene Info — ADAM12

Entrez GeneID	8038
Protein Accession#	NP_003465;NP_067673
Gene Name	ADAM12
Gene Alias	MCMP, MCMPMitna, MLTN, MLTNA
Gene Description	ADAM metallopeptidase domain 12
Omim ID	602714
Gene Ontology	Hyperlink
Gene Summary	This gene encodes a member of the ADAM (a disintegrin and metalloprotease) protein family. Members of this family are membrane-anchored proteins structurally related to snake venom disintegrins, and have been implicated in a variety of biological processes involving cell-cell and cell-matrix interactions, including fertilization, muscle development, and neurogenesis. This gene has two alternatively spliced transcripts: a shorter secreted form and a longer membrane-bound form. The shorter form is found to stimulate myogenesis. [provided by RefSeq]

Other Designations

OTTHUMP00000020727|OTTHUMP00000046766|a disintegrin and metalloproteinase domain 1
2 (meltrin alpha)|meltrin alpha

Publication Reference

- [Binding of ADAM12, a marker of skeletal muscle regeneration, to the muscle-specific actin-binding protein, alpha -actinin-2, is required for myoblast fusion.](#)

Galliano MF, Huet C, Frygeliuss J, Polgren A, Wewer UM, Engvall E.

The Journal of Biological Chemistry 2000 May; 275(18):13933.

Application: IP, WB-Ce, WB-Tr, Mouse, C2C12, CHO Cells

Disease

- [Alzheimer disease](#)
- [Diabetes Mellitus](#)
- [Disease Progression](#)
- [Genetic Predisposition to Disease](#)
- [Osteoarthritis](#)
- [Overweight](#)
- [Tobacco Use Disorder](#)