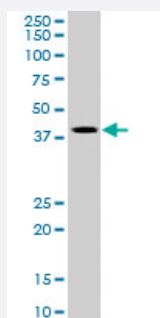


# TIMM50 polyclonal antibody

Catalog # PAB6688

Size 100 ug

## Applications



### Western Blot (Tissue lysate)

TIMM50 polyclonal antibody (Cat # PAB6688) staining (0.5 ug/mL) of human heart lysate (RIPA buffer, 35 ug total protein per lane). Primary incubated for 1 hour. Detected by western blot using chemiluminescence.

## Specification

**Product Description** Goat polyclonal antibody raised against synthetic peptide of TIMM50.

**Immunogen** A synthetic peptide corresponding to human TIMM50.

**Sequence** CDVRTVLEHYALEDD

**Host** Goat

**Theoretical MW (kDa)** 50.5

**Reactivity** Human

**Specificity** This antibody is expected to recognize an human TIM50.

**Form** Liquid

**Purification** Antigen affinity purification

**Concentration** 0.5 mg/mL

**Quality Control Testing** Antibody Reactive Against Synthetic Peptide.

<b>Recommend Usage</b>	ELISA (1:16000) Western Blot (0.5-3 ug/mL) The optimal working dilution should be determined by the end user.
<b>Storage Buffer</b>	In Tris saline, pH 7.3 (0.5% BSA, 0.02% sodium azide)
<b>Storage Instruction</b>	Store at -20°C. Aliquot to avoid repeated freezing and thawing.
<b>Note</b>	This product contains sodium azide: a POISONOUS AND HAZARDOUS SUBSTANCE which should be handled by trained staff only.

## Applications

- Western Blot (Tissue lysate)

TIMM50 polyclonal antibody (Cat # PAB6688) staining (0.5 ug/mL) of human heart lysate (RIPA buffer, 35 ug total protein per lane). Primary incubated for 1 hour. Detected by western blot using chemiluminescence.

- Enzyme-linked Immunoabsorbent Assay

## Gene Info — TIMM50

<b>Entrez GeneID</b>	<a href="#">92609</a>
<b>Protein Accession#</b>	<a href="#">NP_001001563</a>
<b>Gene Name</b>	TIMM50
<b>Gene Alias</b>	MGC102733, TIM50, TIM50L
<b>Gene Description</b>	translocase of inner mitochondrial membrane 50 homolog (S. cerevisiae)
<b>Omim ID</b>	<a href="#">607381</a>
<b>Gene Ontology</b>	<a href="#">Hyperlink</a>
<b>Other Designations</b>	Tim50-like protein homolog of yeast Tim50 translocase of inner mitochondrial membrane 50 homolog

## Publication Reference

- [Tim50, a component of the mitochondrial translocator, regulates mitochondrial integrity and cell death.](#)

Guo Y, Cheong N, Zhang Z, De Rose R, Deng Y, Farber SA, Fernandes-Alnemri T, Alnemri ES.

The Journal of Biological Chemistry 2004 Jun; 279(23):24813.

Application: WB-Tr, Human, HEK 293T cells