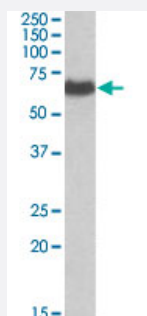


EHD2 polyclonal antibody

Catalog # PAB6684

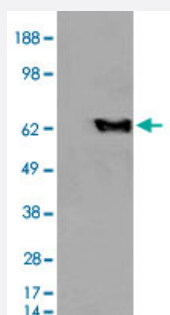
Size 100 ug

Applications



Western Blot (Tissue lysate)

EHD2 polyclonal antibody (Cat # PAB6684) staining (0.01 ug/mL) of human placenta lysate (RIPA buffer, 35 ug total protein per lane). Primary incubated for 1 hour. Detected by western blot using chemiluminescence.



Western Blot (Transfected lysate)

HEK293 overexpressing EHD2 and probed with EHD2 polyclonal antibody (Cat # PAB6684) (mock transfection in first lane), tested by Origene.

Specification

Product Description	Goat polyclonal antibody raised against synthetic peptide of EHD2.
Immunogen	A synthetic peptide corresponding to C-terminus of human EHD2.
Sequence	CRLVPPSKRRHKGSA
Host	Goat
Theoretical MW (kDa)	61.2
Reactivity	Human
Specificity	This antibody is expected to recognize EHD1 protein as well as EHD2.

Form	Liquid
Purification	Antigen affinity purification
Concentration	0.5 mg/mL
Recommend Usage	ELISA (1:64000) Western Blot (0.1-0.3 ug/mL) The optimal working dilution should be determined by the end user.
Storage Buffer	In Tris saline, pH 7.3 (0.5% BSA, 0.02% sodium azide)
Storage Instruction	Store at -20°C. Aliquot to avoid repeated freezing and thawing.
Note	This product contains sodium azide: a POISONOUS AND HAZARDOUS SUBSTANCE which should be handled by trained staff only.

Applications

- Western Blot (Tissue lysate)

EHD2 polyclonal antibody (Cat # PAB6684) staining (0.01 ug/mL) of human placenta lysate (RIPA buffer, 35 ug total protein per lane). Primary incubated for 1 hour. Detected by western blot using chemiluminescence.

- Western Blot (Transfected lysate)

HEK293 overexpressing EHD2 and probed with EHD2 polyclonal antibody (Cat # PAB6684) (mock transfection in first lane), tested by Origene.

- Enzyme-linked Immunoabsorbent Assay

Gene Info — EHD2

Entrez GeneID	30846
Protein Accession#	NP_055416
Gene Name	EHD2
Gene Alias	FLJ96617, PAST2
Gene Description	EH-domain containing 2
Omim ID	605890
Gene Ontology	Hyperlink

Gene Summary

This gene encodes a member of the EH domain-containing protein family. These proteins are characterized by a C-terminal EF-hand domain, a nucleotide-binding consensus site at the N terminus and a bipartite nuclear localization signal. The encoded protein interacts with the actin cytoskeleton through an N-terminal domain and also binds to an EH domain-binding protein through the C-terminal EH domain. This interaction appears to connect clathrin-dependent endocytosis to actin, suggesting that this gene product participates in the endocytic pathway. [provided by RefSeq]

Other Designations

EH domain containing 2

Publication Reference

- [Role of EHD1 and EHBP1 in perinuclear sorting and insulin-regulated GLUT4 recycling in 3T3-L1 adipocytes.](#)

Guilherme A, Soriano NA, Furcinitti PS, Czech MP.

The Journal of Biological Chemistry 2004 Sep; 279(38):40062.

Application: IF, WB, Monkey, Mouse, 3T3-L1, COS-1 cells

Pathway

- [Endocytosis](#)