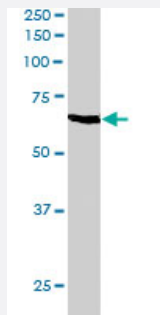


ANTXR1 polyclonal antibody

Catalog # PAB6677

Size 100 ug

Applications



Western Blot (Cell lysate)

ANTXR1 polyclonal antibody (Cat # PAB6677) staining (0.3 ug/mL) of human PBMC lysate (RIPA buffer, 35 ug total protein per lane). Primary incubated for 1 hour. Detected by western blot using chemiluminescence.

Specification

Product Description Goat polyclonal antibody raised against synthetic peptide of ANTXR1.

Immunogen A synthetic peptide corresponding to human ANTXR1.

Sequence C-RAPPPSRPPRPSV

Host Goat

Theoretical MW (kDa) 62.8

Reactivity Human

Specificity This antibody is expected to recognize variant 1 (NP_115584) only.

Form Liquid

Purification Antigen affinity purification

Concentration 0.5 mg/mL

Quality Control Testing Antibody Reactive Against Synthetic Peptide.

Recommend Usage	ELISA (1:64000) Western Blot (0.2-1 ug/mL) The optimal working dilution should be determined by the end user.
Storage Buffer	In Tris saline, pH 7.3 (0.5% BSA, 0.02% sodium azide)
Storage Instruction	Store at -20°C. Aliquot to avoid repeated freezing and thawing.
Note	This product contains sodium azide: a POISONOUS AND HAZARDOUS SUBSTANCE which should be handled by trained staff only.

Applications

- Western Blot (Cell lysate)

ANTXR1 polyclonal antibody (Cat # PAB6677) staining (0.3 ug/mL) of human PBMC lysate (RIPA buffer, 35 ug total protein per lane). Primary incubated for 1 hour. Detected by western blot using chemiluminescence.

- Enzyme-linked Immunoabsorbent Assay

Gene Info — ANTXR1

Entrez GeneID	84168
Protein Accession#	NP_115584
Gene Name	ANTXR1
Gene Alias	ATR, FLJ10601, FLJ11298, FLJ21776, TEM8
Gene Description	anthrax toxin receptor 1
Omim ID	606410
Gene Ontology	Hyperlink
Gene Summary	This gene encodes a type I transmembrane protein and is a tumor-specific endothelial marker that has been implicated in colorectal cancer. The encoded protein has been shown to also be a docking protein or receptor for Bacillus anthracis toxin, the causative agent of the disease, anthrax. The binding of the protective antigen (PA) component, of the tripartite anthrax toxin, to this receptor protein mediates delivery of toxin components to the cytosol of cells. Once inside the cell, the other two components of anthrax toxin, edema factor (EF) and lethal factor (LF) disrupt normal cellular processes. Three alternatively spliced variants that encode different protein isoforms have been described. [provided by RefSeq]
Other Designations	2310008J16Rik 2810405N18Rik tumor endothelial marker 8