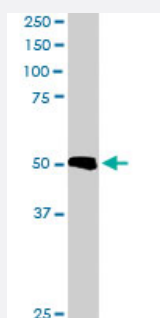


TXNDC5 polyclonal antibody

Catalog # PAB6676

Size 100 ug

Applications



Western Blot (Tissue lysate)

TXNDC5 polyclonal antibody (Cat # PAB6676) staining (0.1 ug/mL) of human placenta lysate (RIPA buffer, 35 ug total protein per lane). Primary incubated for 1 hour. Detected by western blot using chemiluminescence.

Specification

Product Description	Goat polyclonal antibody raised against synthetic peptide of TXNDC5.
Immunogen	A synthetic peptide corresponding to human TXNDC5.
Sequence	C-SLHRFVLSQAKDEL
Host	Goat
Theoretical MW (kDa)	47.6, 36.2
Reactivity	Human
Specificity	This antibody is expected to be able to recognize both reported human isoforms, as represented by NP_110437.2, NP_071368.3.
Form	Liquid
Purification	Antigen affinity purification
Concentration	0.5 mg/mL
Quality Control Testing	Antibody Reactive Against Synthetic Peptide.

Recommend Usage	ELISA (1:64000) Western Blot (0.1-1 ug/mL) The optimal working dilution should be determined by the end user.
Storage Buffer	In Tris saline, pH 7.3 (0.5% BSA, 0.02% sodium azide)
Storage Instruction	Store at -20°C. Aliquot to avoid repeated freezing and thawing.
Note	This product contains sodium azide: a POISONOUS AND HAZARDOUS SUBSTANCE which should be handled by trained staff only.

Applications

- Western Blot (Tissue lysate)

TXNDC5 polyclonal antibody (Cat # PAB6676) staining (0.1 ug/mL) of human placenta lysate (RIPA buffer, 35 ug total protein per lane). Primary incubated for 1 hour. Detected by western blot using chemiluminescence.

- Enzyme-linked Immunoabsorbent Assay

Gene Info — TXNDC5

Entrez GeneID	81567
Protein Accession#	NP_110437.2;NP_071368.3
Gene Name	TXNDC5
Gene Alias	ERP46, EndoPDI, Hcc-2, MGC3178, UNQ364
Gene Description	thioredoxin domain containing 5
Gene Ontology	Hyperlink
Gene Summary	This gene encodes a protein-disulfide isomerase. Its expression is induced by hypoxia and its role may be to protect hypoxic cells from apoptosis. Two transcript variants encoding different isoforms have been found for this gene. [provided by RefSeq]
Other Designations	OTTHUMP00000016005 endothelial protein disulphide isomerase thioredoxin related protein

Publication Reference

- [EndoPDI, a novel protein-disulfide isomerase-like protein that is preferentially expressed in endothelial cells acts as a stress survival factor.](#)

Sullivan DC, Huminiecki L, Moore JW, Boyle JJ, Poulsom R, Creamer D, Barker J, Bicknell R.

The Journal of Biological Chemistry 2003 Nov; 278(47):47079.

Application: WB, Human, Human dermal microvascular endothelial cells

Disease

- [Cognition Disorders](#)
- [Genetic Predisposition to Disease](#)
- [Neuropsychological Tests](#)
- [Schizophrenia](#)
- [Schizophrenic Psychology](#)
- [Vitiligo](#)