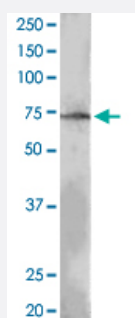


SH2B3 polyclonal antibody

Catalog # PAB6669

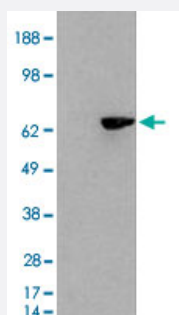
Size 100 ug

Applications



Western Blot (Cell lysate)

SH2B3 polyclonal antibody (Cat # PAB6669) (0.3 ug/mL) staining of MOLT 4 lysate (35 ug protein in RIPA buffer). Primary incubation was 1 hour. Detected by chemiluminescence.



Western Blot (Transfected lysate)

HEK293 overexpressing SH2B3 and probed with SH2B3 polyclonal antibody (Cat # PAB6669) (mock transfection in first lane), tested by Origene.

Specification

Product Description	Goat polyclonal antibody raised against synthetic peptide of SH2B3.
Immunogen	A synthetic peptide corresponding to human SH2B3.
Sequence	NGPALQPSSPC
Host	Goat
Theoretical MW (kDa)	63.2
Reactivity	Human
Form	Liquid

Purification	Antigen affinity purification
Concentration	0.5 mg/mL
Quality Control Testing	Antibody Reactive Against Synthetic Peptide.
Recommend Usage	ELISA (1:64000) Western Blot (0.3-1 ug/mL) The optimal working dilution should be determined by the end user.
Storage Buffer	In Tris saline, pH 7.3 (0.5% BSA, 0.02% sodium azide)
Storage Instruction	Store at -20°C. Aliquot to avoid repeated freezing and thawing.
Note	This product contains sodium azide: a POISONOUS AND HAZARDOUS SUBSTANCE which should be handled by trained staff only.

Applications

- Western Blot (Cell lysate)

SH2B3 polyclonal antibody (Cat # PAB6669) (0.3 ug/mL) staining of MOLT 4 lysate (35 ug protein in RIPA buffer). Primary incubation was 1 hour. Detected by chemiluminescence.

- Western Blot (Transfected lysate)

HEK293 overexpressing SH2B3 and probed with SH2B3 polyclonal antibody (Cat # PAB6669) (mock transfection in first lane), tested by Origene.

- Enzyme-linked Immunoabsorbent Assay

Gene Info — SH2B3

Entrez GeneID	10019
Protein Accession#	NP_005466.1
Gene Name	SH2B3
Gene Alias	CELIAC13, LNK
Gene Description	SH2B adaptor protein 3
Omim ID	605093
Gene Ontology	Hyperlink

Gene Summary

T-cell activation requires stimulation of the T-cell receptor (TCR; see MIM 186880)-CD3 (see CD 3Z; MIM 186780) complex, followed by recruitment of an array of intracellular signaling proteins (e. g., GRB2 (MIM 108355) and PLCG1 (MIM 172420)). Mediating the interaction between the extracellular receptors and intracellular signaling pathways are adaptor proteins such as LAT (MIM 6023 54), TRIM (MIM 604962), and LNK.[supplied by OMIM]

Other Designations

lymphocyte adaptor protein

Publication Reference

- [Cloning and characterization of human Lnk, an adaptor protein with pleckstrin homology and Src homology 2 domains that can inhibit T cell activation.](#)

Li Y, He X, Schembri-King J, Jakes S, Hayashi J.

Journal of Immunology 2000 May; 164(10):5199.

Application: IP, WB-Tr, Human, Monkey, COS-7, Jurkat cells

Pathway

- [Neurotrophin signaling pathway](#)

Disease

- [Addison Disease](#)
- [Asthma](#)
- [Autoimmune Diseases](#)
- [Cardiovascular Diseases](#)
- [Celiac Disease](#)
- [Coronary Disease](#)
- [Diabetes Mellitus](#)
- [Genetic Predisposition to Disease](#)
- [Hypertension](#)
- [Lupus Erythematosus](#)
- [Multiple Sclerosis](#)

- [Myocardial Infarction](#)
- [Nasal Polyps](#)