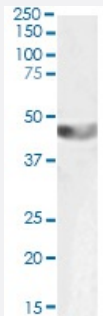


ACTA2 polyclonal antibody

Catalog # PAB6668

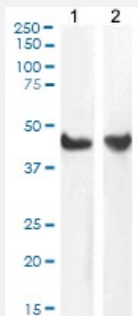
Size 100 ug

Applications



Western Blot (Tissue lysate)

ACTA2 polyclonal antibody (Cat # PAB6668) (1 ug/mL) staining of Human Duodenum lysate (35 ug protein in RIPA buffer). Detected by chemiluminescence.



Western Blot (Cell lysate)

ACTA2 polyclonal antibody (Cat # PAB6668) (1 ug/mL) staining of HeLa (1) and NIH3T3 (2) cell lysate (35 ug protein in RIPA buffer). Detected by chemiluminescence.

Specification

Product Description	Goat polyclonal antibody raised against synthetic peptide of ACTA2.
Immunogen	A synthetic peptide corresponding to N-terminus of human ACTA2.
Sequence	EEEDSTALVC
Host	Goat
Theoretical MW (kDa)	42
Reactivity	Human, Mouse
Specificity	Variants NP_001604.1 and NP_001135417.1 encode the same protein.

Form	Liquid
Purification	Antigen affinity purification
Concentration	0.5 mg/mL
Recommend Usage	ELISA (1:128000) Western Blot (0.3 - 1 ug/mL) The optimal working dilution should be determined by the end user.
Storage Buffer	In Tris saline, pH 7.3 (0.5% BSA, 0.02% sodium azide)
Storage Instruction	Store at -20°C. Aliquot to avoid repeated freezing and thawing.
Note	This product contains sodium azide: a POISONOUS AND HAZARDOUS SUBSTANCE which should be handled by trained staff only.

Applications

- Western Blot (Tissue lysate)

ACTA2 polyclonal antibody (Cat # PAB6668) (1 ug/mL) staining of Human Duodenum lysate (35 ug protein in RIPA buffer). Detected by chemiluminescence.

- Western Blot (Cell lysate)

ACTA2 polyclonal antibody (Cat # PAB6668) (1 ug/mL) staining of HeLa (1) and NIH3T3 (2) cell lysate (35 ug protein in RIPA buffer). Detected by chemiluminescence.

- Enzyme-linked Immunoabsorbent Assay

Gene Info — ACTA2

Entrez GeneID	59
Protein Accession#	NP_001604.1;NP_001135417.1
Gene Name	ACTA2
Gene Alias	AAT6, ACTSA
Gene Description	actin, alpha 2, smooth muscle, aorta
Omim ID	102620
Gene Ontology	Hyperlink

Gene Summary

The protein encoded by this gene belongs to the actin family of proteins, which are highly conserved proteins that play a role in cell motility, structure and integrity. Alpha, beta and gamma actin isoforms have been identified, with alpha actins being a major constituent of the contractile apparatus, while beta and gamma actins are involved in the regulation of cell motility. This actin is an alpha actin that is found in skeletal muscle. Defects in this gene cause aortic aneurysm familial thoracic type 6. Multiple alternatively spliced variants, encoding the same protein, have been identified. [provided by RefSeq]

Other Designations

OTTHUMP00000020042|alpha 2 actin|alpha-cardiac actin|growth-inhibiting gene 46

Publication Reference

- [Novel HLA-G-binding leukocyte immunoglobulin-like receptor \(LILR\) expression patterns in human placentas and umbilical cords.](#)

McIntire RH, Sifers T, Platt JS, Ganacias KG, Langat DK, Hunt JS.

Placenta 2008 Jun; 29(7):631.

Pathway

- [Vascular smooth muscle contraction](#)

Disease

- [Alzheimer Disease](#)
- [Cardiovascular Diseases](#)
- [Diabetes Mellitus](#)
- [Edema](#)
- [Genetic Predisposition to Disease](#)