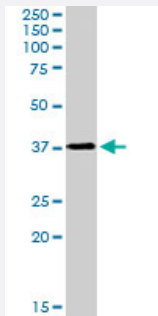


LAT polyclonal antibody

Catalog # PAB6652 Size 100 ug

Applications



Western Blot (Cell lysate)

LAT polyclonal antibody (Cat # PAB6652) (0.01 ug/mL) staining of peripheral blood mononucleocytes lysate (35 ug protein in RIPA buffer). Primary incubation was 1 hour. Detected by chemiluminescence.

Specification

Product Description	Goat polyclonal antibody raised against synthetic peptide of LAT.
Immunogen	A synthetic peptide corresponding to human LAT.
Sequence	C-GAPDYENLQELN
Host	Goat
Theoretical MW (kDa)	27.9, 25, 24.8
Reactivity	Human, Mouse, Rat
Specificity	This antibody is expected to recognize isoform a (NP_055202.1), isoform b (NP_001014987.1 and NP_001014989.1) and isoform c (NP_001014988.1).
Form	Liquid
Purification	Antigen affinity purification
Concentration	0.5 mg/mL
Quality Control Testing	Antibody Reactive Against Synthetic Peptide.

Recommend Usage	ELISA (1:2000) Western Blot (1-3 ug/mL) The optimal working dilution should be determined by the end user.
Storage Buffer	In Tris saline, pH 7.3 (0.5% BSA, 0.02% sodium azide)
Storage Instruction	Store at -20°C. Aliquot to avoid repeated freezing and thawing.
Note	This product contains sodium azide: a POISONOUS AND HAZARDOUS SUBSTANCE which should be handled by trained staff only.

Applications

- Western Blot (Cell lysate)

LAT polyclonal antibody (Cat # PAB6652) (0.01 ug/mL) staining of peripheral blood mononucleocytes lysate (35 ug protein in RIPA buffer). Primary incubation was 1 hour. Detected by chemiluminescence.

- Enzyme-linked Immunoabsorbent Assay

Gene Info — LAT

Entrez GeneID	27040
Protein Accession#	NP_055202.1;NP_001014987.1;NP_001014989.1;NP_001014988.1
Gene Name	LAT
Gene Alias	LAT1, pp36
Gene Description	linker for activation of T cells
Omim ID	602354
Gene Ontology	Hyperlink
Gene Summary	The protein encoded by this gene is phosphorylated by ZAP-70/Syk protein tyrosine kinases following activation of the T-cell antigen receptor (TCR) signal transduction pathway. This transmembrane protein localizes to lipid rafts and acts as a docking site for SH2 domain-containing proteins. Upon phosphorylation, this protein recruits multiple adaptor proteins and downstream signaling molecules into multimolecular signaling complexes located near the site of TCR engagement. Alternative splicing results in multiple transcript variants encoding different isoforms. [provided by RefSeq]
Other Designations	36 kDa phospho-tyrosine adaptor protein

Publication Reference

- [LAT is required for TCR-mediated activation of PLCgamma1 and the Ras pathway.](#)

Finco TS, Kadlecsek T, Zhang W, Samelson LE, Weiss A.

Immunity 1998 Nov; 9(5):617.

Application: WB-Ce, WB-Tr, Human, Jurkat, J.CaM2 cells

Pathway

- [Fc epsilon RI signaling pathway](#)
- [Fc gamma R-mediated phagocytosis](#)
- [Natural killer cell mediated cytotoxicity](#)
- [T cell receptor signaling pathway](#)