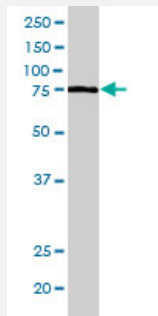


# LCP2 polyclonal antibody

Catalog # PAB6649

Size 100 ug

## Applications



### Western Blot (Cell lysate)

LCP2 polyclonal antibody (Cat # PAB6649) staining (0.5 ug/mL) of Jurkat lysate (RIPA buffer, 35 ug total protein per lane). Primary incubated for 1 hour. Detected by western blot using chemiluminescence.

## Specification

**Product Description** Goat polyclonal antibody raised against synthetic peptide of LCP2.

**Immunogen** A synthetic peptide corresponding to human LCP2.

**Sequence** ALRNVPRSEV-C

**Host** Goat

**Theoretical MW (kDa)** 60.2

**Reactivity** Human

**Form** Liquid

**Purification** Antigen affinity purification

**Concentration** 0.5 mg/mL

**Quality Control Testing** Antibody Reactive Against Synthetic Peptide.

**Recommend Usage**  
 ELISA (1:32000)  
 Western Blot (0.5-2 ug/mL)  
 The optimal working dilution should be determined by the end user.

<b>Storage Buffer</b>	In Tris saline, pH 7.3 (0.5% BSA, 0.02% sodium azide)
<b>Storage Instruction</b>	Store at -20°C. Aliquot to avoid repeated freezing and thawing.
<b>Note</b>	This product contains sodium azide: a POISONOUS AND HAZARDOUS SUBSTANCE which should be handled by trained staff only.

## Applications

- Western Blot (Cell lysate)

LCP2 polyclonal antibody (Cat # PAB6649) staining (0.5 ug/mL) of Jurkat lysate (RIPA buffer, 35 ug total protein per lane). Primary incubated for 1 hour. Detected by western blot using chemiluminescence.

- Enzyme-linked Immunoabsorbent Assay

## Gene Info — LCP2

<b>Entrez GeneID</b>	<a href="#">3937</a>
<b>Protein Accession#</b>	<a href="#">NP_005556</a>
<b>Gene Name</b>	LCP2
<b>Gene Alias</b>	SLP-76, SLP76
<b>Gene Description</b>	lymphocyte cytosolic protein 2 (SH2 domain containing leukocyte protein of 76kDa)
<b>Omim ID</b>	<a href="#">601603</a>
<b>Gene Ontology</b>	<a href="#">Hyperlink</a>

<b>Gene Summary</b>	SLP-76 was originally identified as a substrate of the ZAP-70 protein tyrosine kinase following T cell receptor (TCR) ligation in the leukemic T cell line Jurkat. The SLP-76 locus has been localized to human chromosome 5q33 and the gene structure has been partially characterized in mice. The human and murine cDNAs both encode 533 amino acid proteins that are 72% identical and comprised of three modular domains. The NH2-terminus contains an acidic region that includes a PEST domain and several tyrosine residues which are phosphorylated following TCR ligation. SLP-76 also contains a central proline-rich domain and a COOH-terminal SH2 domain. A number of additional proteins have been identified that associate with SLP-76 both constitutively and inducibly following receptor ligation, supporting the notion that SLP-76 functions as an adaptor or scaffold protein. Studies using SLP-76 deficient T cell lines or mice have provided strong evidence that SLP-76 plays a positive role in promoting T cell development and activation as well as mast cell and platelet function. [provided by RefSeq]
---------------------	---

**Other Designations**

76 kDa tyrosine phosphoprotein|SH2 domain-containing leukocyte protein of 76kD|lymphocyte cytosolic protein 2|lymphocyte cytosolic protein 2 (SH2 domain-containing leukocyte protein of 76kD )

## Publication Reference

- [Molecular cloning of SLP-76, a 76-kDa tyrosine phosphoprotein associated with Grb2 in T cells.](#)

Jackman JK, Motto DG, Sun Q, Tanemoto M, Turck CW, Peltz GA, Koretzky GA, Findell PR.

The Journal of Biological Chemistry 1995 Mar; 270(13):7029.

Application: WB-Ce, WB-Ti, Human, Human cell lines, Human tissues

## Pathway

- [Fc epsilon RI signaling pathway](#)
- [Natural killer cell mediated cytotoxicity](#)
- [T cell receptor signaling pathway](#)

## Disease

- [Disease Progression](#)
- [Disease Susceptibility](#)
- [HIV Infections](#)
- [Lymphedema](#)