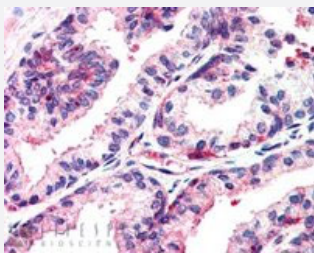


# MSX1 polyclonal antibody

Catalog # PAB6647      Size 100 ug

## Applications



### Immunohistochemistry (Formalin/PFA-fixed paraffin-embedded sections)

MSX1 polyclonal antibody (Cat # PAB6647) (2.5 ug/mL) staining of paraffin embedded human prostate. Steamed antigen retrieval with citrate buffer pH 6, AP-staining.

## Specification

**Product Description** Goat polyclonal antibody raised against synthetic peptide of MSX1.

**Immunogen** A synthetic peptide corresponding to human MSX1.

**Sequence** TSLPLGVKVEDS-C

**Host** Goat

**Theoretical MW (kDa)** 30.9

**Reactivity** Human

**Form** Liquid

**Purification** Antigen affinity purification

**Concentration** 0.5 mg/mL

**Quality Control Testing** Antibody Reactive Against Synthetic Peptide.

**Recommend Usage**  
 ELISA (1:16000)  
 Immunohistochemistry (2-4 ug/mL)  
 The optimal working dilution should be determined by the end user.

<b>Storage Buffer</b>	In Tris saline, pH 7.3 (0.5% BSA, 0.02% sodium azide)
<b>Storage Instruction</b>	Store at -20°C. Aliquot to avoid repeated freezing and thawing.
<b>Note</b>	This product contains sodium azide: a POISONOUS AND HAZARDOUS SUBSTANCE which should be handled by trained staff only.

## Applications

- Immunohistochemistry (Formalin/PFA-fixed paraffin-embedded sections)

MSX1 polyclonal antibody (Cat # PAB6647) (2.5 ug/mL) staining of paraffin embedded human prostate. Steamed antigen retrieval with citrate buffer pH 6, AP-staining.

- Enzyme-linked Immunoabsorbent Assay

## Gene Info — MSX1

<b>Entrez GeneID</b>	<a href="#">4487</a>
<b>Protein Accession#</b>	<a href="#">NP_002439</a>
<b>Gene Name</b>	MSX1
<b>Gene Alias</b>	HOX7, HYD1
<b>Gene Description</b>	msh homeobox 1
<b>Omim ID</b>	<a href="#">106600</a> <a href="#">142983</a> <a href="#">189500</a> <a href="#">608874</a>
<b>Gene Ontology</b>	<a href="#">Hyperlink</a>
<b>Gene Summary</b>	This gene encodes a member of the muscle segment homeobox gene family. The encoded protein functions as a transcriptional repressor during embryogenesis through interactions with components of the core transcription complex and other homeoproteins. It may also have roles in limb-pattern formation, craniofacial development, particularly odontogenesis, and tumor growth inhibition. Mutations in this gene, which was once known as homeobox 7, have been associated with nonsyndromic cleft lip with or without cleft palate 5, Witkop syndrome, Wolf-Hirschorn syndrome, and autosomal dominant hypodontia. [provided by RefSeq]
<b>Other Designations</b>	OTTHUMP00000115387 homeobox 7 msh homeobox 1 msh homeobox homolog 1

## Publication Reference

- [Endogenous Msx1 antisense transcript: in vivo and in vitro evidences, structure, and potential involvement in skeleton development in mammals.](#)

Blin-Wakkach C, Lezot F, Ghoul-Mazgar S, Hotton D, Monteiro S, Teillaud C, Pibouin L, Orestes-Cardoso S, Papagerakis P, Macdougall M, Robert B, Berdal A.

PNAS 2001 Jun; 98(13):7336.

Application: ICC, WB-Tr, Mouse, MO6-G3 cells

## Disease

- [Breast Neoplasms](#)
- [Cleft Lip](#)
- [Cleft Palate](#)
- [Disease Models](#)
- [Genetic Predisposition to Disease](#)
- [Multiple System Atrophy](#)
- [Parkinson disease](#)
- [Sleep Apnea](#)