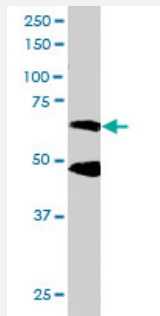


# CPEB1 polyclonal antibody

Catalog # PAB6644

Size 100 ug

## Applications



### Western Blot (Tissue lysate)

CPEB1 polyclonal antibody (Cat # PAB6644) staining (0.5 ug/mL) of human brain lysate (RIPA buffer, 35 ug total protein per lane). Primary incubated for 1 hour. Detected by western blot using chemiluminescence.

## Specification

**Product Description** Goat polyclonal antibody raised against synthetic peptide of CPEB1.

**Immunogen** A synthetic peptide corresponding to human CPEB1.

**Sequence** C-PLMRNQKNRDSS

**Host** Goat

**Theoretical MW (kDa)** 62.1, 54.2, 53.6

**Reactivity** Human

**Form** Liquid

**Purification** Antigen affinity purification

**Concentration** 0.5 mg/mL

**Quality Control Testing** Antibody Reactive Against Synthetic Peptide.

**Recommend Usage**  
 ELISA (1:128000)  
 Western Blot (0.5-2 ug/mL)  
 The optimal working dilution should be determined by the end user.

Storage Buffer	In Tris saline, pH 7.3 (0.5% BSA, 0.02% sodium azide)
Storage Instruction	Store at -20°C. Aliquot to avoid repeated freezing and thawing.
Note	This product contains sodium azide: a POISONOUS AND HAZARDOUS SUBSTANCE which should be handled by trained staff only.

## Applications

- Western Blot (Tissue lysate)

CPEB1 polyclonal antibody (Cat # PAB6644) staining (0.5 ug/mL) of human brain lysate (RIPA buffer, 35 ug total protein per lane). Primary incubated for 1 hour. Detected by western blot using chemiluminescence.

- Enzyme-linked Immunoabsorbent Assay

## Gene Info — CPEB1

Entrez GeneID	<a href="#">64506</a>
Protein Accession#	<a href="#">NP_085097</a>
Gene Name	CPEB1
Gene Alias	CEBP, CPE-BP1, CPEB, FLJ13203, MGC34136, MGC60106
Gene Description	cytoplasmic polyadenylation element binding protein 1
Omim ID	<a href="#">607342</a>
Gene Ontology	<a href="#">Hyperlink</a>
Gene Summary	This gene encodes a member of the cytoplasmic polyadenylation element (CPE) binding protein family. This highly conserved protein binds to a specific RNA sequence called the CPE found in the 3' UTR of some mRNAs. Similar proteins in <i>Xenopus</i> and mouse function to induce cytoplasmic polyadenylation of dormant mRNAs with short polyA tails, resulting in their translation. Members of this protein family regulate translation of cyclin B1 during embryonic cell divisions. Multiple transcript variants encoding different isoforms have been found for this gene. [provided by RefSeq]
Other Designations	CPE-binding protein 1

## Publication Reference

- [Identification and characterization of the gene encoding human cytoplasmic polyadenylation element binding protein.](#)

Welk JF, Charlesworth A, Smith GD, MacNicol AM.

Gene 2001 Jan; 263(1-2):113.

## Pathway

- [Dorso-ventral axis formation](#)

## Disease

- [Genetic Predisposition to Disease](#)