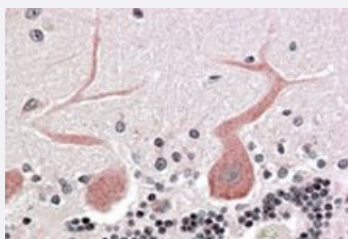


CDC42BPA polyclonal antibody

Catalog # PAB6628

Size 100 ug

Applications



Immunohistochemistry (Formalin/PFA-fixed paraffin-embedded sections)

CDC42BPA polyclonal antibody (Cat # PAB6628)(3.8 ug/mL) staining of paraffin embedded human cerebellum. Steamed antigen retrieval with citrate buffer pH 6, AP-staining.

Specification

Product Description	Goat polyclonal antibody raised against synthetic peptide of CDC42BPA.
Immunogen	A synthetic peptide corresponding to N-terminus of human CDC42BPA.
Sequence	SGEVRLRQLEQFI-C
Host	Goat
Theoretical MW (kDa)	186, 196
Reactivity	Human
Form	Liquid
Purification	Antigen affinity purification
Concentration	0.5 mg/mL
Recommend Usage	ELISA (1:16000) Immunohistochemistry (Formalin/PFA-fixed paraffin-embedded sections) (3-6 ug/mL) The optimal working dilution should be determined by the end user.
Storage Buffer	In Tris saline, pH 7.3 (0.5% BSA, 0.02% sodium azide)

Storage Instruction

Store at -20°C.
Aliquot to avoid repeated freezing and thawing.

Note

This product contains sodium azide: a POISONOUS AND HAZARDOUS SUBSTANCE which should be handled by trained staff only.

Applications

- Immunohistochemistry (Formalin/PFA-fixed paraffin-embedded sections)

CDC42BPA polyclonal antibody (Cat # PAB6628)(3.8 ug/mL) staining of paraffin embedded human cerebellum. Steamed antigen retrieval with citrate buffer pH 6, AP-staining.

- Enzyme-linked Immunoabsorbent Assay

Gene Info — CDC42BPA

Entrez GeneID[8476](#)**Protein Accession#**[NP_055641.3;NP_003598.2](#)**Gene Name**

CDC42BPA

Gene Alias

DKFZp686L1738, DKFZp686P1738, FLJ23347, KIAA0451, MRCK, MRCKA, PK428

Gene Description

CDC42 binding protein kinase alpha (DMPK-like)

Omim ID[603412](#)**Gene Ontology**[Hyperlink](#)**Gene Summary**

The protein encoded by this gene is a member of the Serine/Threonine protein kinase family. This kinase contains multiple functional domains. Its kinase domain is highly similar to that of the myotonic dystrophy protein kinase (DMPK). This kinase also contains a Rac interactive binding (CRIB) domain, and has been shown to bind CDC42. It may function as a CDC42 downstream effector mediating CDC42 induced peripheral actin formation, and promoting cytoskeletal reorganization. Multiple alternatively spliced transcript variants have been described, and the full-length nature of two of them has been reported. [provided by RefSeq]

Other Designations

CDC42 binding protein kinase beta|CDC42-binding protein kinase alpha|CDC42-binding protein kinase alpha (DMPK-like)|OTTHUMP00000035727|OTTHUMP00000035728|myotonic dystrophy kinase-related CDC42-binding protein kinase alpha|ser-thr protein kinase PK428|ser

Publication Reference

- [Cloning and chromosomal location of a novel member of the myotonic dystrophy family of protein kinases.](#)

Zhao Y, Loyer P, Li H, Valentine V, Kidd V, Kraft AS.

The Journal of Biological Chemistry 1997 Apr; 272(15):10013.

Application: IP, KA, WB-Ce, WB-Tr, Human, Monkey, COS-7, MDA-MB-231 cells

Disease

- [Kidney Failure](#)