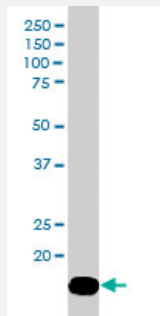


ARPC3 polyclonal antibody

Catalog # PAB6621 Size 100 ug

Applications



Western Blot (Tissue lysate)

ARPC3 polyclonal antibody (Cat # PAB6621) staining (1 ug/mL) of Mouse brain lysate (RIPA buffer, 35 ug total protein per lane). Primary incubated for 1 hour. Detected by western blot using chemiluminescence.

Specification

Product Description	Goat polyclonal antibody raised against synthetic peptide of ARPC3.
Immunogen	A synthetic peptide corresponding to human ARPC3.
Sequence	C-RQFMNKSLSGPGQ
Host	Goat
Theoretical MW (kDa)	20.5
Reactivity	Human, Mouse
Specificity	There are two hypothetical proteins called "similar to the Arp2/3 protein complex subunit p21-Arc" that are virtually identical (CAC14083, XP_208062).
Form	Liquid
Purification	Antigen affinity purification
Concentration	0.5 mg/mL
Quality Control Testing	Antibody Reactive Against Synthetic Peptide.

Recommend Usage	ELISA (1:16000) Western Blot (1-3 ug/mL) The optimal working dilution should be determined by the end user.
Storage Buffer	In Tris saline, pH 7.3 (0.5% BSA, 0.02% sodium azide)
Storage Instruction	Store at -20°C. Aliquot to avoid repeated freezing and thawing.
Note	This product contains sodium azide: a POISONOUS AND HAZARDOUS SUBSTANCE which should be handled by trained staff only.

Applications

- Western Blot (Tissue lysate)

ARPC3 polyclonal antibody (Cat # PAB6621) staining (1 ug/mL) of Mouse brain lysate (RIPA buffer, 35 ug total protein per lane). Primary incubated for 1 hour. Detected by western blot using chemiluminescence.

- Enzyme-linked Immunoabsorbent Assay

Gene Info — ARPC3

Entrez GeneID	10094
Protein Accession#	NP_005710
Gene Name	ARPC3
Gene Alias	ARC21, p21-Arc
Gene Description	actin related protein 2/3 complex, subunit 3, 21kDa
Omim ID	604225
Gene Ontology	Hyperlink
Gene Summary	This gene encodes one of seven subunits of the human Arp2/3 protein complex. The Arp2/3 protein complex has been implicated in the control of actin polymerization in cells and has been conserved through evolution. The exact role of the protein encoded by this gene, the p21 subunit, has yet to be determined. [provided by RefSeq]
Other Designations	ARP2/3 protein complex subunit p21 actin related protein 2/3 complex subunit 3 actin related protein 2/3 complex, subunit 3 (21 kD)

Publication Reference

- [The human Arp2/3 complex is composed of evolutionarily conserved subunits and is localized to cellular regions of dynamic actin filament assembly.](#)

Welch MD, DePace AH, Verma S, Iwamatsu A, Mitchison TJ.

The Journal of Cell Biology 1997 Jul; 138(2):375.

Application: WB-Ce, Chicken, Human, Mouse, 3T3, HeLa cells, Fibroblast

Pathway

- [Fc gamma R-mediated phagocytosis](#)
- [Regulation of actin cytoskeleton](#)