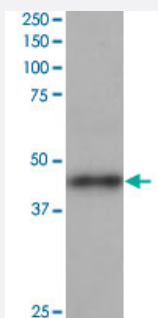


ACTR1B polyclonal antibody

Catalog # PAB6618

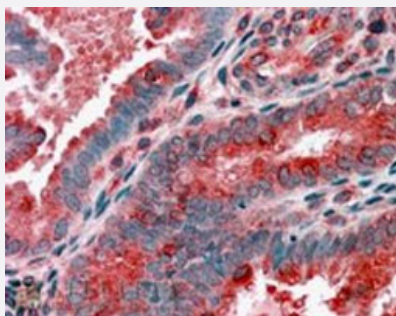
Size 100 ug

Applications



Western Blot (Tissue lysate)

ACTR1B polyclonal antibody (Cat # PAB6618) staining (1 ug/mL) of human heart lysate (RIPA buffer, 35 ug total protein per lane). Primary incubated for 1 hour. Detected by western blot using chemiluminescence.



Immunohistochemistry (Formalin/PFA-fixed paraffin-embedded sections)

ACTR1B polyclonal antibody (Cat # PAB6618, 3.8 ug/mL) staining of paraffin embedded human uterus. Steamed antigen retrieval with citrate buffer pH 6, AP-staining.

Specification

Product Description	Goat polyclonal antibody raised against synthetic peptide of ACTR1B.
Immunogen	A synthetic peptide corresponding to human ACTR1B.
Sequence	C-YEEDGSRAIHRKT
Host	Goat
Theoretical MW (kDa)	42.3
Reactivity	Human

Specificity	This epitope was selected to minimise the chance of cross-reactivity with ACTR1A (YEEDGARSIIHRKT).
Form	Liquid
Purification	Antigen affinity purification
Concentration	0.5 mg/mL
Quality Control Testing	Antibody Reactive Against Synthetic Peptide.
Recommend Usage	ELISA (1:128000) Western blot (0.5-2 ug/mL) Immunohistochemistry (Formalin/PFA-fixed paraffin-embedded sections) (3-5 ug/mL) The optimal working dilution should be determined by the end user.
Storage Buffer	In Tris saline, pH 7.3 (0.5% BSA, 0.02% sodium azide)
Storage Instruction	Store at -20°C. Aliquot to avoid repeated freezing and thawing.
Note	This product contains sodium azide: a POISONOUS AND HAZARDOUS SUBSTANCE which should be handled by trained staff only.

Applications

- Western Blot (Tissue lysate)

ACTR1B polyclonal antibody (Cat # PAB6618) staining (1 ug/mL) of human heart lysate (RIPA buffer, 35 ug total protein per lane). Primary incubated for 1 hour. Detected by western blot using chemiluminescence.

- Immunohistochemistry (Formalin/PFA-fixed paraffin-embedded sections)

ACTR1B polyclonal antibody (Cat # PAB6618, 3.8 ug/mL) staining of paraffin embedded human uterus. Steamed antigen retrieval with citrate buffer pH 6, AP-staining.

- Enzyme-linked Immunoabsorbent Assay

Gene Info — ACTR1B

Entrez GeneID	10120
Protein Accession#	NP_005726
Gene Name	ACTR1B
Gene Alias	ARP1B, CTRN2, PC3

Gene Description	ARP1 actin-related protein 1 homolog B, centractin beta (yeast)
Omim ID	605144
Gene Ontology	Hyperlink
Gene Summary	<p>This gene encodes a 42.3 kD subunit of dynactin, a macromolecular complex consisting of 10 subunits ranging in size from 22 to 150 kD. Dynactin binds to both microtubules and cytoplasmic dynein and is involved in a diverse array of cellular functions, including ER-to-Golgi transport, the centripetal movement of lysosomes and endosomes, spindle formation, chromosome movement, nuclear positioning, and axonogenesis. This subunit, like ACTR1A, is an actin-related protein. These two proteins, which are of equal length and share 90% amino acid identity, are present in a constant ratio of approximately 1:15 in the dynactin complex. [provided by RefSeq]</p>
Other Designations	ARP1 actin-related protein 1 homolog B, centractin beta centractin beta

Publication Reference

- [Beta-centractin: characterization and distribution of a new member of the centractin family of actin-related proteins.](#)

Clark SW, Staub O, Clark IB, Holzbaur EL, Paschal BM, Vallee RB, Meyer DI.

Molecular Biology of the Cell 1994 Dec; 5(12):1301.