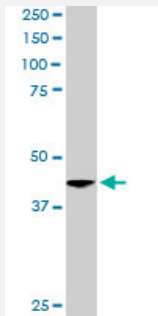


ACTR1A polyclonal antibody

Catalog # PAB6617 Size 100 ug

Applications



Western Blot (Tissue lysate)

ACTR1A polyclonal antibody (Cat # PAB6617) staining (1 ug/mL) of human brain lysate (RIPA buffer, 35 ug total protein per lane). Primary incubated for 1 hour. Detected by western blot using chemiluminescence.

Specification

Product Description	Goat polyclonal antibody raised against synthetic peptide of ACTR1A.
Immunogen	A synthetic peptide corresponding to human ACTR1A.
Sequence	C-YEEDGARSIHRT
Host	Goat
Theoretical MW (kDa)	42.6
Reactivity	Human
Specificity	This epitope was selected to minimise the chance of cross-reactivity with ACTR1B (YEEDGSRAIHRKT).
Form	Liquid
Purification	Antigen affinity purification
Concentration	0.5 mg/mL
Quality Control Testing	Antibody Reactive Against Synthetic Peptide.

Recommend Usage	ELISA (1:8000) Western Blot (1-3 ug/mL) The optimal working dilution should be determined by the end user.
Storage Buffer	In Tris saline, pH 7.3 (0.5% BSA, 0.02% sodium azide)
Storage Instruction	Store at -20°C. Aliquot to avoid repeated freezing and thawing.
Note	This product contains sodium azide: a POISONOUS AND HAZARDOUS SUBSTANCE which should be handled by trained staff only.

Applications

- Western Blot (Tissue lysate)

ACTR1A polyclonal antibody (Cat # PAB6617) staining (1 ug/mL) of human brain lysate (RIPA buffer, 35 ug total protein per lane). Primary incubated for 1 hour. Detected by western blot using chemiluminescence.

- Enzyme-linked Immunoabsorbent Assay

Gene Info — ACTR1A

Entrez GeneID	10121
Protein Accession#	NP_005727.1
Gene Name	ACTR1A
Gene Alias	ARP1, CTRN1, FLJ52695, FLJ52800, FLJ55002
Gene Description	ARP1 actin-related protein 1 homolog A, centractin alpha (yeast)
Omim ID	605143
Gene Ontology	Hyperlink
Gene Summary	This gene encodes a 42.6 kD subunit of dynactin, a macromolecular complex consisting of 10-11 subunits ranging in size from 22 to 150 kD. Dynactin binds to both microtubules and cytoplasmic dynein. It is involved in a diverse array of cellular functions, including ER-to-Golgi transport, the centripetal movement of lysosomes and endosomes, spindle formation, chromosome movement, nuclear positioning, and axonogenesis. This subunit is present in 8-13 copies per dynactin molecule, and is the most abundant molecule in the dynactin complex. It is an actin-related protein, and is approximately 60% identical at the amino acid level to conventional actin. [provided by RefSeq]
Other Designations	ARP1 actin-related protein 1 homolog A, centractin alpha ARP1, yeast homolog A OTTHUMP0000020366 actin-RPV centractin alpha centrosome-associated actin homolog

Publication Reference

- [A vertebrate actin-related protein is a component of a multisubunit complex involved in microtubule-based vesicle motility.](#)

Lees-Miller JP, Helfman DM, Schroer TA.

Nature 1992 Sep; 359(6392):244.

Application: WB-Re, WB-Ti, Human, Rat, Rat brains, Recombinant proteins